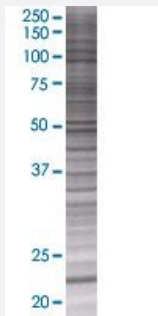


SENP8 293T Cell Transient Overexpression Lysate(Denatured)

Catalog # H00123228-T01

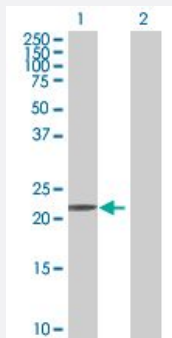
Size 100 uL

Applications



SDS-PAGE Gel

SENP8 transfected lysate.



Western Blot

Lane 1: SENP8 transfected lysate (23.43 KDa)

Lane 2: Non-transfected lysate.

Specification

Transfected Cell Line	293T
Plasmid	pCMV-SENP8 full-length
Host	Human
Theoretical MW (kDa)	23.43
Interspecies Antigen Sequence	Mouse (92); Rat (92)

Quality Control Testing

Transient overexpression cell lysate was tested with Anti-SENP8 antibody ([H00123228-B01](#)) by Western Blots.
SDS-PAGE Gel
SENP8 transfected lysate.
Western Blot
Lane 1: SENP8 transfected lysate (23.43 KDa)
Lane 2: Non-transfected lysate.

Storage Buffer

1X Sample Buffer (50 mM Tris-HCl, 2% SDS, 10% glycerol, 300 mM 2-mercaptoethanol, 0.01% Bromophenol blue)

Storage Instruction

Store at -80°C. Aliquot to avoid repeated freezing and thawing.

Applications

- Western Blot

Gene Info — SENP8

Entrez GeneID

[123228](#)

GeneBank Accession#

[NM_145204.2](#)

Protein Accession#

[NP_660205.2](#)

Gene Name

SENP8

Gene Alias

DEN1, HsT17512, NEDP1, PRSC2

Gene Description

SUMO/sentrin specific peptidase family member 8

Omim ID

[608659](#)

Gene Ontology

[Hyperlink](#)

Gene Summary

NEDD8 (MIM 603171) is a ubiquitin-like protein that becomes conjugated to the cullin (see CUL1; MIM 603134) subunit of several ubiquitin ligases. This conjugation, called neddylation, is required for optimal ubiquitin ligase activity. NEDD8-specific deneddylases, such as NEDP1, or DEN1, are required to process the NEDD8 propeptide at a C-terminal diglycine motif and to remove NEDD8 from cullins (Gan-Erdene et al., 2003 [PubMed 12759363]).[supplied by OMIM]

Other Designations

NEDD8-specific protease 1|SUMO/sentrin specific protease family member 8|deneddylase 1|protease, cysteine, 2 (NEDD8 specific)|sentrin/SUMO-specific protease SENP8