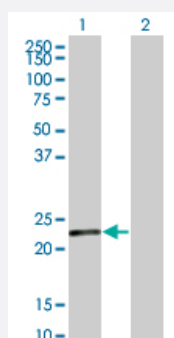


SENTP8 monoclonal antibody (M06), clone 2E1

Catalog # H00123228-M06

Size 100 ug

Applications

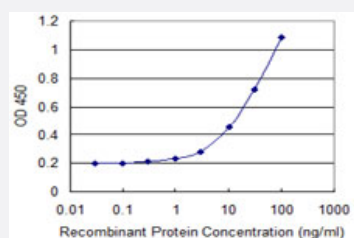


Western Blot (Transfected lysate)

Western Blot analysis of SENP8 expression in transfected 293T cell line by SENP8 monoclonal antibody (M06), clone 2E1.

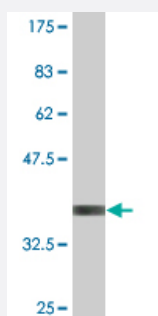
Lane 1: SENP8 transfected lysate (24.1 KDa).

Lane 2: Non-transfected lysate.



Sandwich ELISA (Recombinant protein)

Detection limit for recombinant GST tagged SENP8 is 0.3 ng/ml as a capture antibody.



Western Blot detection against Immunogen (36.74 KDa) .

Specification

Product Description

Mouse monoclonal antibody raised against a partial recombinant SENP8.

Immunogen	SENP8 (NP_660205, 113 a.a. ~ 212 a.a) partial recombinant protein with GST tag. MW of the GST tag alone is 26 KDa.
Sequence	NSFFHYDSHSRSNSVHAKQVAEKLEAFLGRKGDKLAFVEEKAPAQQNSYDCGMVICNTEALCQ NFFRQQTESLLQLLTPAYITKKRGEWKDLIATLAKK
Host	Mouse
Reactivity	Human
Interspecies Antigen Sequence	Mouse (92); Rat (92)
Isotype	IgG2a Kappa
Quality Control Testing	Antibody Reactive Against Recombinant Protein. Western Blot detection against Immunogen (36.74 KDa) .
Storage Buffer	In 1x PBS, pH 7.4
Storage Instruction	Store at -20°C or lower. Aliquot to avoid repeated freezing and thawing.

Applications

- Western Blot (Transfected lysate)

Western Blot analysis of SENP8 expression in transfected 293T cell line by SENP8 monoclonal antibody (M06), clone 2E1.

Lane 1: SENP8 transfected lysate(24.1 KDa).

Lane 2: Non-transfected lysate.

[Protocol Download](#)

- Western Blot (Recombinant protein)

[Protocol Download](#)

- Sandwich ELISA (Recombinant protein)

Detection limit for recombinant GST tagged SENP8 is 0.3 ng/ml as a capture antibody.

[Protocol Download](#)

- ELISA

Gene Info — SENP8

Entrez GeneID	123228
GeneBank Accession#	NM_145204
Protein Accession#	NP_660205
Gene Name	SENP8
Gene Alias	DEN1, HsT17512, NEDP1, PRSC2
Gene Description	SUMO/sentrin specific peptidase family member 8
Omim ID	608659
Gene Ontology	Hyperlink
Gene Summary	NEDD8 (MIM 603171) is a ubiquitin-like protein that becomes conjugated to the cullin (see CUL1; MIM 603134) subunit of several ubiquitin ligases. This conjugation, called neddylation, is required for optimal ubiquitin ligase activity. NEDD8-specific deneddylases, such as NEDP1, or DEN1, are required to process the NEDD8 propeptide at a C-terminal diglycine motif and to remove NEDD8 from cullins (Gan-Erdene et al., 2003 [PubMed 12759363]).[supplied by OMIM]
Other Designations	NEDD8-specific protease 1 SUMO/sentrin specific protease family member 8 deneddylase 1 protease, cysteine, 2 (NEDD8 specific) sentrin/SUMO-specific protease SENP8