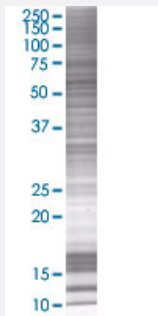


TTC8 293T Cell Transient Overexpression Lysate(Denatured)

Catalog # H00123016-T01

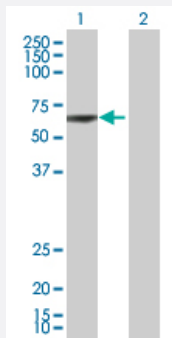
Size 100 uL

Applications



SDS-PAGE Gel

TTC8 transfected lysate.



Western Blot

Lane 1: TTC8 transfected lysate (57.3 KDa)

Lane 2: Non-transfected lysate.

Specification

Transfected Cell Line	293T
Plasmid	pCMV-TTC8 full-length
Host	Human
Theoretical MW (kDa)	57.3
Interspecies Antigen Sequence	Mouse (93); Rat (83)

Quality Control Testing

Transient overexpression cell lysate was tested with Anti-TTC8 antibody ([H00123016-B01](#)) by Western Blots.
SDS-PAGE Gel
TTC8 transfected lysate.
Western Blot
Lane 1: TTC8 transfected lysate (57.3 KDa)
Lane 2: Non-transfected lysate.

Storage Buffer

1X Sample Buffer (50 mM Tris-HCl, 2% SDS, 10% glycerol, 300 mM 2-mercaptoethanol, 0.01% Bromophenol blue)

Storage Instruction

Store at -80°C. Aliquot to avoid repeated freezing and thawing.

Applications

- Western Blot

Gene Info — TTC8

Entrez GeneID[123016](#)**GeneBank Accession#**[NM_198309.2](#)**Protein Accession#**[-](#)**Gene Name**

TTC8

Gene Alias

BBS8

Gene Description

tetratricopeptide repeat domain 8

Omim ID[209900 608132](#)**Gene Ontology**[Hyperlink](#)**Gene Summary**

This gene encodes a protein that has been directly linked to Bardet-Biedl syndrome. The primary features of this syndrome include retinal dystrophy, obesity, polydactyly, renal abnormalities and learning disabilities. Experimentation in non-human eukaryotes suggests that this gene is expressed in ciliated cells and that it is involved in the formation of cilia. Alternate transcriptional splice variants have been characterized. [provided by RefSeq]

Other Designations

Bardet-Biedl syndrome type 8

Disease

- [Bardet-Biedl Syndrome](#)
- [Obesity](#)
- [Retinal Diseases](#)