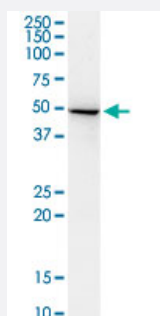


ADSSL1 monoclonal antibody (M01), clone 2D12

Catalog # H00122622-M01

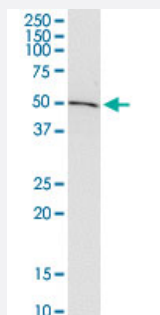
Size 100 ug

Applications



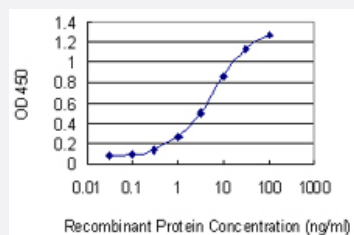
Western Blot (Tissue lysate)

ADSSL1 monoclonal antibody (M01), clone 2D12. Western Blot analysis of ADSSL1 expression in human kidney.



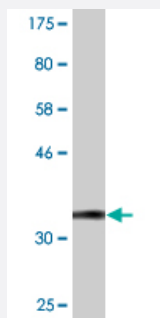
Western Blot (Cell lysate)

ADSSL1 monoclonal antibody (M01), clone 2D12. Western Blot analysis of ADSSL1 expression in A-431.



Sandwich ELISA (Recombinant protein)

Detection limit for recombinant GST tagged ADSSL1 is 0.1 ng/ml as a capture antibody.



Western Blot detection against Immunogen (33.22 KDa) .

Specification

Product Description	Mouse monoclonal antibody raised against a partial recombinant ADSSL1.
Immunogen	ADSSL1 (NP_689541.1, 369 a.a. ~ 436 a.a) partial recombinant protein with GST tag. MW of the GST tag alone is 26 KDa.
Sequence	VLGEVKVGVS YKLNGKRIPYFPANQEMLQKVEVEYETLPGWKADTTGARRWEDLPPQAQNYIRFVENH
Host	Mouse
Reactivity	Human
Interspecies Antigen Sequence	Rat (96)
Isotype	IgG1 Kappa
Quality Control Testing	Antibody Reactive Against Recombinant Protein. Western Blot detection against Immunogen (33.22 KDa) .
Storage Buffer	In 1x PBS, pH 7.4
Storage Instruction	Store at -20°C or lower. Aliquot to avoid repeated freezing and thawing.

Applications

- Western Blot (Tissue lysate)

ADSSL1 monoclonal antibody (M01), clone 2D12. Western Blot analysis of ADSSL1 expression in human kidney.

[Protocol Download](#)

- Western Blot (Cell lysate)

ADSSL1 monoclonal antibody (M01), clone 2D12. Western Blot analysis of ADSSL1 expression in A-431.

[Protocol Download](#)

- Western Blot (Recombinant protein)

[Protocol Download](#)

- Sandwich ELISA (Recombinant protein)

Detection limit for recombinant GST tagged ADSSL1 is 0.1 ng/ml as a capture antibody.

[Protocol Download](#)

- ELISA

Gene Info — ADSSL1

Entrez GeneID [122622](#)

GeneBank Accession# [NM_152328](#)

Protein Accession# [NP_689541.1](#)

Gene Name ADSSL1

Gene Alias FLJ38602

Gene Description adenylosuccinate synthase like 1

Gene Ontology [Hyperlink](#)

Gene Summary ADSSL1 is a muscle isozyme of adenylosuccinate synthase (EC 6.3.4.4), which catalyzes the initial reaction in the conversion of inosine monophosphate (IMP) to adenosine monophosphate (AMP) (Sun et al., 2005 [PubMed 15786719]).[supplied by OMIM]

Other Designations adenylosuccinate synthase-like 1

Pathway

- [Alanine](#)
- [Biosynthesis of alkaloids derived from histidine and purine](#)

- [Metabolic pathways](#)
- [Purine metabolism](#)

Disease

- [Kidney Failure](#)