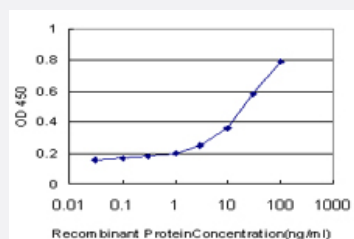


# SP7 monoclonal antibody (M01), clone 2G6

Catalog # H00121340-M01

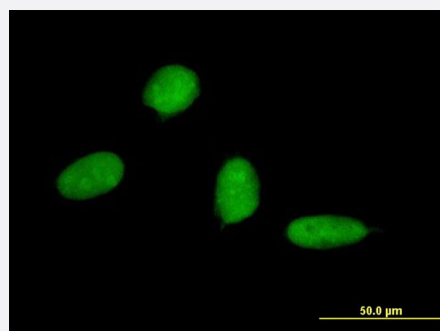
Size 100 ug

## Applications



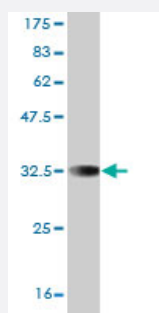
### Sandwich ELISA (Recombinant protein)

Detection limit for recombinant GST tagged SP7 is approximately 1 ng/ml as a capture antibody.



### Immunofluorescence

Immunofluorescence of monoclonal antibody to SP7 on HeLa cell . [antibody concentration 10 ug/ml]



Western Blot detection against Immunogen (34.1 KDa) .

## Specification

### Product Description

Mouse monoclonal antibody raised against a partial recombinant SP7.

Immunogen	SP7 (NP_690599, 87 a.a. ~ 162 a.a) partial recombinant protein with GST tag. MW of the GST tag alone is 26 KDa.
Sequence	GYANDYPPFSHSPGPTGTQDPGLLVPKGHSDDCLPSVYTSLDMTHPYGSWYKAGIHAGISPGP GNTPTPWWDMMH
Host	Mouse
Reactivity	Human
Interspecies Antigen Sequence	Mouse (94); Rat (94)
Isotype	IgG2a Kappa
Quality Control Testing	Antibody Reactive Against Recombinant Protein. Western Blot detection against Immunogen (34.1 KDa) .
Storage Buffer	In 1x PBS, pH 7.4
Storage Instruction	Store at -20°C or lower. Aliquot to avoid repeated freezing and thawing.

## Applications

- Western Blot (Recombinant protein)

[Protocol Download](#)

- Sandwich ELISA (Recombinant protein)

Detection limit for recombinant GST tagged SP7 is approximately 1 ng/ml as a capture antibody.

[Protocol Download](#)

- ELISA

- Immunofluorescence

Immunofluorescence of monoclonal antibody to SP7 on HeLa cell . [antibody concentration 10 ug/ml]

## Gene Info — SP7

Entrez GeneID	<a href="#">121340</a>
GeneBank Accession#	<a href="#">NM_152860</a>

Protein Accession#	<a href="#">NP_690599</a>
Gene Name	SP7
Gene Alias	MGC126598, OSX, osterix
Gene Description	Sp7 transcription factor
Omim ID	<a href="#">606633</a>
Gene Ontology	<a href="#">Hyperlink</a>
Gene Summary	SP7 is a C2H2-type zinc finger transcription factor of the SP gene family and a putative master regulator of bone cell differentiation (Gao et al., 2004 [PubMed 15474293]).[supplied by OMIM]
Other Designations	osterix

## Disease

- [Fractures](#)
- [Wounds and Injuries](#)