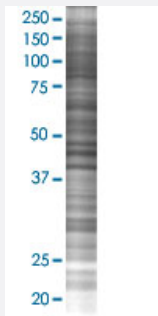


LYZL2 293T Cell Transient Overexpression Lysate(Denatured)

Catalog # H00119180-T02

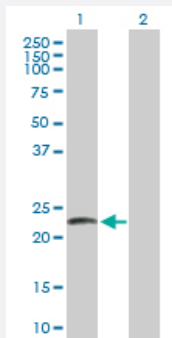
Size 100 uL

Applications



SDS-PAGE Gel

LYZL2 transfected lysate.



Western Blot

Lane 1: LYZL2 transfected lysate (21.60 KDa)

Lane 2: Non-transfected lysate.

Specification

Transfected Cell Line 293T

Plasmid pCMV-LYZL2 full-length

Host Human

Theoretical MW (kDa) 21.6

Quality Control Testing Transient overexpression cell lysate was tested with Anti-LYZL2 antibody ([H00119180-B01P](#)) by Western Blots.
SDS-PAGE Gel
LYZL2 transfected lysate.
Western Blot
Lane 1: LYZL2 transfected lysate (21.60 KDa)
Lane 2: Non-transfected lysate.

Storage Buffer

1X Sample Buffer (50 mM Tris-HCl, 2% SDS, 10% glycerol, 300 mM 2-mercaptoethanol, 0.01% Bromophenol blue)

Storage Instruction

Store at -80°C. Aliquot to avoid repeated freezing and thawing.

Applications

- Western Blot

Gene Info — LYZL2

Entrez GeneID[119180](#)**GeneBank Accession#**[NM_183058](#)**Protein Accession#**[NP_898881.2](#)**Gene Name**

LYZL2

Gene Alias

-

Gene Description

lysozyme-like 2

Gene Ontology[Hyperlink](#)**Gene Summary**

Lysozymes (see LYZ; MIM 153450), especially C-type lysozymes, are well-recognized bacteriolytic factors widely distributed in the animal kingdom and play a mainly protective role in host defense. LYZL2 is a member of a family of lysozyme-like genes (Zhang et al., 2005 [PubMed 16014814]).[supplied by OMIM]

Other Designations

OTTHUMP00000019400|lysozyme 2