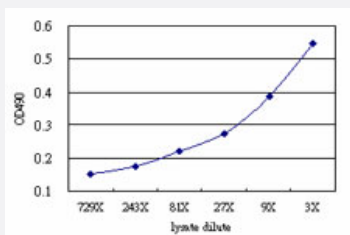


C10orf4 (Human) Matched Antibody Pair

Catalog # H00118924-AP51

Size 1 Set

Applications



Sandwich ELISA detection sensitivity ranging from approximately 81x to 3x dilution of the C10orf4 293T overexpression lysate (non-denatured).

Specification

| | |
|--------------------------------------|--|
| Product Description | This antibody pair set comes with a matched antibody pair to detect and quantify the protein level of human C10orf4. |
| Reactivity | Human |
| Interspecies Antigen Sequence | Mouse (86); Rat (86) |
| Quality Control Testing | Standard curve using C10orf4 293T overexpression lysate (non-denatured) as an analyte. Sandwich ELISA detection sensitivity ranging from approximately 81x to 3x dilution of the C10orf4 293T overexpression lysate (non-denatured). |
| Supplied Product | Antibody pair set content: 1. Capture antibody: mouse monoclonal anti-C10orf4 (100 ug) 2. Detection antibody: rabbit purified polyclonal anti-C10orf4 (50 ug) *Reagents are sufficient for at least 3-5 x 96 well plates using recommended protocols. |
| Storage Instruction | Store reagents of the antibody pair set at -20°C or lower. Please aliquot to avoid repeated freeze thaw cycle. Reagents should be returned to -20°C storage immediately after use. |

Applications

- [ELISA Pair \(Transfected lysate\)](#)

[Protocol Download](#)

Gene Info — C10orf4

| | |
|--------------------|--|
| Entrez GeneID | 118924 |
| Gene Name | C10orf4 |
| Gene Alias | F26C11.1-like, FRA10A, FRA10AC1 |
| Gene Description | chromosome 10 open reading frame 4 |
| Omim ID | 608866 |
| Gene Ontology | Hyperlink |
| Gene Summary | FRA(10)(q23.3) |
| Other Designations | FRA10AC1 protein OTTHUMP00000020120 fragile site 10q23.3 rare folic acid-type fragile site, FRA(10)(q23.3), candidate gene 1 |

Disease

- [Alzheimer Disease](#)
- [Genetic Predisposition to Disease](#)