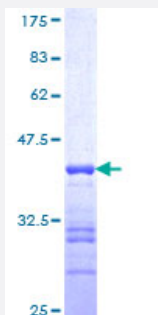


UBE2J2 (Human) Recombinant Protein (Q01)

Catalog # H00118424-Q01

Size 25 ug, 10 ug

Applications



Specification

Product Description	Human UBE2J2 partial ORF (NP_055881, 124 a.a. - 224 a.a.) recombinant protein with GST-tag at N-terminal.
Sequence	EKGPTLGSIETSDFTKRQLAVQSLAFNLKDKVFCELFPEVVVEIKQKQKAQDELSSRPQTLPLPD VVPDGETHLVQNGIQLLNHAPGAVPNLAGLQQANR
Host	Wheat Germ (in vitro)
Theoretical MW (kDa)	36.85
Interspecies Antigen Sequence	Mouse (94)
Preparation Method	in vitro wheat germ expression system
Purification	Glutathione Sepharose 4 Fast Flow
Quality Control Testing	12.5% SDS-PAGE Stained with Coomassie Blue.
Storage Buffer	50 mM Tris-HCl, 10 mM reduced Glutathione, pH=8.0 in the elution buffer.
Storage Instruction	Store at -80°C. Aliquot to avoid repeated freezing and thawing.
Note	Best use within three months from the date of receipt of this protein.

Applications

- Enzyme-linked Immunoabsorbent Assay
- Western Blot (Recombinant protein)
- Antibody Production
- Protein Array

Gene Info — UBE2J2

Entrez GeneID [118424](#)

GeneBank Accession# [NM_058167](#)

Protein Accession# [NP_055881](#)

Gene Name UBE2J2

Gene Alias NCUBE2, PRO2121

Gene Description ubiquitin-conjugating enzyme E2, J2 (UBC6 homolog, yeast)

Gene Ontology [Hyperlink](#)

Gene Summary The modification of proteins with ubiquitin is an important cellular mechanism for targeting abnormal or short-lived proteins for degradation. Ubiquitination involves at least three classes of enzymes: ubiquitin-activating enzymes, or E1s, ubiquitin-conjugating enzymes, or E2s, and ubiquitin-protein ligases, or E3s. This gene encodes a member of the E2 ubiquitin-conjugating enzyme family. This enzyme is located in the membrane of the endoplasmic reticulum. Multiple alternatively spliced transcript variants have been found for this gene, but the full-length nature of some variants has not been defined. [provided by RefSeq]

Other Designations OTTHUMP00000001907|OTTHUMP00000002078|ubiquitin conjugating enzyme 6|ubiquitin conjugating enzyme E2, J2|yeast UBC6 homolog

Pathway

- [Ubiquitin mediated proteolysis](#)