

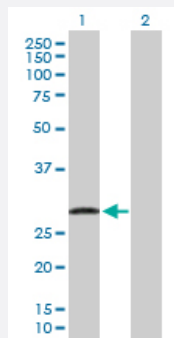
MaxPab®

UBE2J2 purified MaxPab rabbit polyclonal antibody (D01P)

Catalog # H00118424-D01P

Size 100 ug

Applications



Western Blot (Transfected lysate)

Western Blot analysis of UBE2J2 expression in transfected 293T cell line ([H00118424-T01](#)) by UBE2J2 MaxPab polyclonal antibody.

Lane 1: UBE2J2 transfected lysate(28.90 KDa).

Lane 2: Non-transfected lysate.

Specification

Product Description

Rabbit polyclonal antibody raised against a full-length human UBE2J2 protein.

Immunogen

UBE2J2 (NP_477515.2, 1 a.a. ~ 259 a.a) full-length human protein.

Sequence

MSSTSSKRAPTTATQRLKQDYLRKKDPVPYCAEPLPSNILEWHYVVRGPEMTPYEGGYH GKLI
PREFPFKPPSYMITPNGRFKCNTRLCLSITDFHPDTWNPASVSTILTGLLSFMVEKGPTLGS
SDFTKRQLAVQSLAFNLKDKVFCELFPEVVVEIKKQKQKAQDELSSRPQTLPLPDVVPDGE
THLVQNGIQLLNHAPGAVPNLAGLQQANRHHGLLGGALANL FVVGFAAFAYTVKYVLRSAQE

Host

Rabbit

Reactivity

Human

Interspecies Antigen Sequence

Mouse (94)

Quality Control Testing

Antibody reactive against mammalian transfected lysate.

Storage Buffer

In 1x PBS, pH 7.4

Storage Instruction

Store at -20°C or lower. Aliquot to avoid repeated freezing and thawing.

Applications

- Western Blot (Transfected lysate)

Western Blot analysis of UBE2J2 expression in transfected 293T cell line ([H00118424-T01](#)) by UBE2J2 MaxPab polyclonal antibody.

Lane 1: UBE2J2 transfected lysate(28.90 KDa).

Lane 2: Non-transfected lysate.

[Protocol Download](#)

Gene Info — UBE2J2

Entrez GeneID [118424](#)

GeneBank Accession# [NM_058167.2](#)

Protein Accession# [NP_477515.2](#)

Gene Name UBE2J2

Gene Alias NCUBE2, PRO2121

Gene Description ubiquitin-conjugating enzyme E2, J2 (UBC6 homolog, yeast)

Gene Ontology [Hyperlink](#)

Gene Summary The modification of proteins with ubiquitin is an important cellular mechanism for targeting abnormal or short-lived proteins for degradation. Ubiquitination involves at least three classes of enzymes: ubiquitin-activating enzymes, or E1s, ubiquitin-conjugating enzymes, or E2s, and ubiquitin-protein ligases, or E3s. This gene encodes a member of the E2 ubiquitin-conjugating enzyme family. This enzyme is located in the membrane of the endoplasmic reticulum. Multiple alternatively spliced transcript variants have been found for this gene, but the full-length nature of some variants has not been defined. [provided by RefSeq]

Other Designations OTTHUMP00000001907|OTTHUMP00000002078|ubiquitin conjugating enzyme 6|ubiquitin conjugating enzyme E2, J2|yeast UBC6 homolog

Pathway

- [Ubiquitin mediated proteolysis](#)