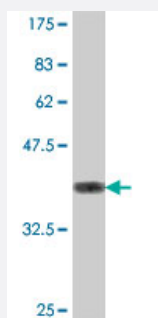


UBE2J2 polyclonal antibody (A01)

Catalog # H00118424-A01

Size 50 uL

Applications



Western Blot detection against Immunogen (37.22 KDa) .

Specification

Product Description	Mouse polyclonal antibody raised against a partial recombinant UBE2J2.
Immunogen	UBE2J2 (NP_055881, 124 a.a. ~ 224 a.a) partial recombinant protein with GST tag.
Sequence	EKGPTLGSJETSDFTKRQLAVQSLAFNLKDKVFCELFPEVVVEIKQKQKAQDELSSRPQTLPLPD VVPDGETHLVQNGIQLLNHAPGAVPNLAGLQQANR
Host	Mouse
Reactivity	Human
Interspecies Antigen Sequence	Mouse (94)
Quality Control Testing	Antibody Reactive Against Recombinant Protein. Western Blot detection against Immunogen (37.22 KDa) .
Storage Buffer	50 % glycerol
Storage Instruction	Store at -20°C or lower. Aliquot to avoid repeated freezing and thawing.

Applications

- Western Blot (Recombinant protein)

[Protocol Download](#)

- ELISA

Gene Info — UBE2J2

Entrez GeneID [118424](#)

GeneBank Accession# [NM_058167](#)

Protein Accession# [NP_055881](#)

Gene Name UBE2J2

Gene Alias NCUBE2, PRO2121

Gene Description ubiquitin-conjugating enzyme E2, J2 (UBC6 homolog, yeast)

Gene Ontology [Hyperlink](#)

Gene Summary The modification of proteins with ubiquitin is an important cellular mechanism for targeting abnormal or short-lived proteins for degradation. Ubiquitination involves at least three classes of enzymes: ubiquitin-activating enzymes, or E1s, ubiquitin-conjugating enzymes, or E2s, and ubiquitin-protein ligases, or E3s. This gene encodes a member of the E2 ubiquitin-conjugating enzyme family. This enzyme is located in the membrane of the endoplasmic reticulum. Multiple alternatively spliced transcript variants have been found for this gene, but the full-length nature of some variants has not been defined. [provided by RefSeq]

Other Designations OTTHUMP00000001907|OTTHUMP00000002078|ubiquitin conjugating enzyme 6|ubiquitin conjugating enzyme E2, J2|yeast UBC6 homolog

Pathway

- [Ubiquitin mediated proteolysis](#)