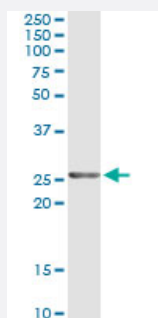


TWIST2 (Human) IP-WB Antibody Pair

Catalog # H00117581-PW2

Size 1 Set

Applications



Immunoprecipitation of TWIST2 transfected lysate using mouse monoclonal anti-TWIST2 and Protein A Magnetic Bead ([U0007](#)), and immunoblotted with rabbit polyclonal anti-TWIST2.

Specification

Product Description	This IP-WB antibody pair set comes with one antibody for immunoprecipitation and another to detect the precipitated protein in western blot.
Reactivity	Human
Interspecies Antigen Sequence	Mouse (100); Rat (100)
Quality Control Testing	Immunoprecipitation-Western Blot (IP-WB) Immunoprecipitation of TWIST2 transfected lysate using mouse monoclonal anti-TWIST2 and Protein A Magnetic Bead (U0007), and immunoblotted with rabbit polyclonal anti-TWIST2.
Supplied Product	Antibody pair set content: 1. Antibody pair for IP: mouse monoclonal anti-TWIST2 (300 ug) 2. Antibody pair for WB: rabbit polyclonal anti-TWIST2 (50 ul)
Storage Instruction	Store reagents of the antibody pair set at -20°C or lower. Please aliquot to avoid repeated freeze thaw cycle. Reagents should be returned to -20°C storage immediately after use.

Applications

- Immunoprecipitation-Western Blot

[Protocol Download](#)

Gene Info — TWIST2

Entrez GeneID [117581](#)

Gene Name TWIST2

Gene Alias DERMO1, MGC117334, bHLHa39

Gene Description twist homolog 2 (Drosophila)

Omim ID [607556](#)

Gene Ontology [Hyperlink](#)

Gene Summary Basic helix-loop-helix (bHLH) transcription factors have been implicated in cell lineage determination and differentiation. The protein encoded by this gene is a bHLH transcription factor and shares similarity with another bHLH transcription factor, Twist. It is thought that during osteoblast development this protein may inhibit osteoblast maturation and maintain cells in a preosteoblast phenotype. [provided by RefSeq]

Other Designations dermis-expressed protein 1|twist homolog 2|twist-related bHLH protein Dermo1