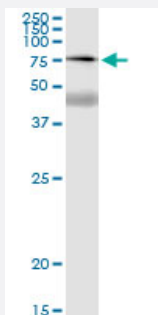


# SSX2IP (Human) IP-WB Antibody Pair

Catalog # H00117178-PW1

Size 1 Set

## Applications



Immunoprecipitation of SSX2IP transfected lysate using rabbit polyclonal anti-SSX2IP and Protein A Magnetic Bead ([U0007](#)), and immunoblotted with mouse purified polyclonal anti-SSX2IP.

## Specification

<b>Product Description</b>	This IP-WB antibody pair set comes with one antibody for immunoprecipitation and another to detect the precipitated protein in western blot.
<b>Reactivity</b>	Human
<b>Interspecies Antigen Sequence</b>	Mouse (87); Rat (86)
<b>Quality Control Testing</b>	Immunoprecipitation-Western Blot (IP-WB) Immunoprecipitation of SSX2IP transfected lysate using rabbit polyclonal anti-SSX2IP and Protein A Magnetic Bead ( <a href="#">U0007</a> ), and immunoblotted with mouse purified polyclonal anti-SSX2IP.
<b>Supplied Product</b>	Antibody pair set content: 1. Antibody pair for IP: rabbit polyclonal anti-SSX2IP (300 ul) 2. Antibody pair for WB: mouse purified polyclonal anti-SSX2IP (50 ug)
<b>Storage Instruction</b>	Store reagents of the antibody pair set at -20°C or lower. Please aliquot to avoid repeated freeze thaw cycle. Reagents should be returned to -20°C storage immediately after use.

## Applications

- Immunoprecipitation-Western Blot

[Protocol Download](#)

## Gene Info — SSX2IP

**Entrez GeneID** [117178](#)

**Gene Name** SSX2IP

**Gene Alias** ADIP, FLJ10848, KIAA0923, MGC75026

**Gene Description** synovial sarcoma, X breakpoint 2 interacting protein

**Omim ID** [608690](#)

**Gene Ontology** [Hyperlink](#)

**Gene Summary** O

**Other Designations** OTTHUMP00000011574|afadin- and alpha-actinin-binding protein

## Pathway

- [Adherens junction](#)