

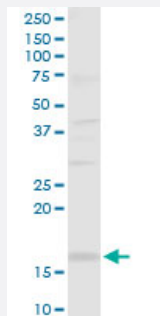
MaxPab®

SH2D1B purified MaxPab rabbit polyclonal antibody (D01P)

Catalog # H00117157-D01P

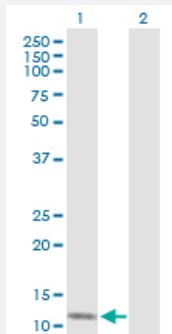
Size 100 ug

Applications



Western Blot (Cell lysate)

SH2D1B MaxPab rabbit polyclonal antibody. Western Blot analysis of SH2D1B expression in A-431.



Western Blot (Transfected lysate)

Western Blot analysis of SH2D1B expression in transfected 293T cell line ([H00117157-T01](#)) by SH2D1B MaxPab polyclonal antibody.

Lane 1: SH2D1B transfected lysate(15.30 KDa).

Lane 2: Non-transfected lysate.

Specification

Product Description	Rabbit polyclonal antibody raised against a full-length human SH2D1B protein.
Immunogen	SH2D1B (NP_444512.2, 1 a.a. ~ 132 a.a) full-length human protein.
Sequence	MDLPYYHGRLTKQDCETLLKKEGVDGNFLLRDSESIPGVLCLCVSFKNIVYTYRIFREKHGYYRIQTA EGSPKQVFPSELKELISKFEKPNQGMVVHLLKPIKRTSPSLRWRLKLELETFTVNSNSDYVDVLP
Host	Rabbit
Reactivity	Human

Interspecies Antigen Sequence	Mouse (65); Rat (65)
Quality Control Testing	Antibody reactive against mammalian transfected lysate.
Storage Buffer	In 1x PBS, pH 7.4
Storage Instruction	Store at -20°C or lower. Aliquot to avoid repeated freezing and thawing.

Applications

- Western Blot (Cell lysate)

SH2D1B MaxPab rabbit polyclonal antibody. Western Blot analysis of SH2D1B expression in A-431.

[Protocol Download](#)

- Western Blot (Transfected lysate)

Western Blot analysis of SH2D1B expression in transfected 293T cell line ([H00117157-T01](#)) by SH2D1B MaxPab polyclonal antibody.

Lane 1: SH2D1B transfected lysate(15.30 KDa).

Lane 2: Non-transfected lysate.

[Protocol Download](#)

Gene Info — SH2D1B

Entrez GeneID	117157
GeneBank Accession#	NM_053282
Protein Accession#	NP_444512.2
Gene Name	SH2D1B
Gene Alias	EAT2
Gene Description	SH2 domain containing 1B
Omim ID	608510
Gene Ontology	Hyperlink
Gene Summary	By binding phosphotyrosines through its free SRC (MIM 190090) homology-2 (SH2) domain, EAT 2 regulates signal transduction through receptors expressed on the surface of antigen-presenting cells (Morra et al., 2001 [PubMed 11689425]).[supplied by OMIM]

Other Designations

OTTHUMP00000029531|SH2 domain-containing molecule EAT2

Pathway

- [Natural killer cell mediated cytotoxicity](#)