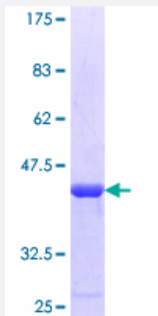


CATSPER1 (Human) Recombinant Protein (Q01)

Catalog # H00117144-Q01

Size 25 ug, 10 ug

Applications



Specification

| | |
|--------------------------------|--|
| Product Description | Human CATSPER1 partial ORF (NP_444282.2, 681 a.a. - 780 a.a.) recombinant protein with GST-tag at N-terminal. |
| Sequence | GLEKAKQERAARIQEKLLEDSTELRAAEPKEVASEGTMKRLIEKKFGTMTEKQQELLFHYLQLV ASVEQEQQKFRSQAAVIDENDTTFEAGEEDFRN |
| Host | Wheat Germ (in vitro) |
| Theoretical MW (kDa) | 36.74 |
| Preparation Method | in vitro wheat germ expression system |
| Purification | Glutathione Sepharose 4 Fast Flow |
| Quality Control Testing | 12.5% SDS-PAGE Stained with Coomassie Blue. |
| Storage Buffer | 50 mM Tris-HCl, 10 mM reduced Glutathione, pH=8.0 in the elution buffer. |
| Storage Instruction | Store at -80°C. Aliquot to avoid repeated freezing and thawing. |
| Note | Best use within three months from the date of receipt of this protein. |

Applications

- Enzyme-linked Immunoabsorbent Assay
- Western Blot (Recombinant protein)
- Antibody Production
- Protein Array

Gene Info — CATSPER1

Entrez GeneID [117144](#)

GeneBank Accession# [NM_053054](#)

Protein Accession# [NP_444282.2](#)

Gene Name CATSPER1

Gene Alias CATSPER, MGC33335, MGC33368

Gene Description cation channel, sperm associated 1

Omim ID [606389](#)

Gene Ontology [Hyperlink](#)

Gene Summary Calcium ions play a primary role in the regulation of sperm motility. This gene belongs to a family of putative cation channels that are specific to spermatozoa and localize to the flagellum. The protein family features a single repeat with six membrane-spanning segments and a predicted calcium-selective pore region. [provided by RefSeq]

Other Designations cation channel of sperm|sperm ion channel|sperm-associated cation channel 1