

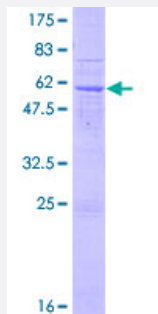
Full-Length

ART5 (Human) Recombinant Protein (P01)

Catalog # H00116969-P01

Size 25 ug, 10 ug

Applications



Specification

Product Description

Human ART5 full-length ORF (AAH14577.1, 1 a.a. - 292 a.a.) recombinant protein with GST-tag at N-terminal.

Sequence

MALAALMIALGSLGLHTWQAQAVPTILPLGLAPDTFDDTYVGCVEEMEEKAAPLLKEEMAHHALL
RESWEAAQETWEDKRRGLTLPPGFKAQNGIAMVYTNSSNTLYWELNQAVRTGGGSRELYMRHF
PFKALHFYLIRALQLLRGSGGCSRGPGEVVFRGVGSLRFEPKRLGDSVRLGQFASSSLDKAVAH
RFGNATLFSLTTCFGAPIQAFSVFPKEREVLIPPHEVFLVTRFSQDGAQSLVTLWSYNQTCSHFNC
AYLGGEKRRGCVSAPGALGTGDLHMTKRHLQQP

Host

Wheat Germ (in vitro)

Theoretical MW (kDa)

58.6

Interspecies Antigen Sequence

Mouse (83); Rat (82)

Preparation Method

[in vitro wheat germ expression system](#)

Purification

Glutathione Sepharose 4 Fast Flow

Quality Control Testing

12.5% SDS-PAGE Stained with Coomassie Blue.

Storage Buffer

50 mM Tris-HCl, 10 mM reduced Glutathione, pH=8.0 in the elution buffer.

Storage Instruction

Store at -80°C. Aliquot to avoid repeated freezing and thawing.

Note

Best use within three months from the date of receipt of this protein.

Applications

- Enzyme-linked Immunoabsorbent Assay
- Western Blot (Recombinant protein)
- Antibody Production
- Protein Array

Gene Info — ART5

Entrez GeneID[116969](#)**GeneBank Accession#**[BC014577.1](#)**Protein Accession#**[AAH14577.1](#)**Gene Name**

ART5

Gene Alias

MGC22848

Gene Description

ADP-ribosyltransferase 5

Omim ID[610625](#)**Gene Ontology**[Hyperlink](#)**Gene Summary**

The protein encoded by this gene belongs to the ARG-specific ADP-ribosyltransferase family. Proteins in this family regulate the function of target proteins by attaching ADP-ribose to specific amino acid residues in their target proteins. The mouse homolog lacks a glycosylphosphatidylinositol-anchor signal sequence and is predicted to be a secretory enzyme. Transcript variants with different 5' UTRs, but encoding the same protein have been found for this gene. [provided by RefSeq]

Other Designations

NAD(P)(+)-arginine ADP-ribosyltransferase 5|ecto-ADP-ribosyltransferase 5|mono(ADP-ribosyl)transferase 5