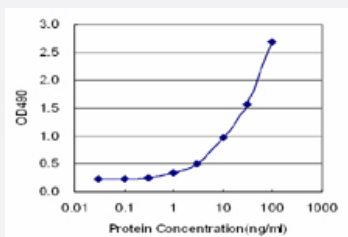


LRG1 (Human) Matched Antibody Pair

Catalog # H00116844-AP11

Size 1 Set

Applications



Sandwich ELISA detection sensitivity ranging from 1 ng/ml to 100 ng/ml.

Specification

Product Description	This antibody pair set comes with a matched antibody pair to detect and quantify the protein level of human LRG1.
Reactivity	Human
Interspecies Antigen Sequence	Mouse (66); Rat (64)
Quality Control Testing	Standard curve using recombinant protein (H00116844-P01) as an analyte. Sandwich ELISA detection sensitivity ranging from 1 ng/ml to 100 ng/ml.
Supplied Product	Antibody pair set content: 1. Capture antibody: rabbit MaxPab® affinity purified polyclonal anti-LRG1 (100 ug) 2. Detection antibody: mouse monoclonal anti-LRG1, IgG2b Kappa (20 ug) *Reagents are sufficient for at least 1-2 x 96 well plates using recommended protocols.
Storage Instruction	Store reagents of the antibody pair set at -20°C or lower. Please aliquot to avoid repeated freeze thaw cycle. Reagents should be returned to -20°C storage immediately after use.

Applications

- ELISA Pair (Recombinant protein)

[Protocol Download](#)

Gene Info — LRG1

Entrez GeneID	116844
---------------	------------------------

Gene Name	LRG1
-----------	------

Gene Alias	HMFT1766, LRG
------------	---------------

Gene Description	leucine-rich alpha-2-glycoprotein 1
------------------	-------------------------------------

Omim ID	611289
---------	------------------------

Gene Ontology	Hyperlink
---------------	---------------------------

Gene Summary	The leucine-rich repeat (LRR) family of proteins, including LRG1, have been shown to be involved in protein-protein interaction, signal transduction, and cell adhesion and development. LRG1 is expressed during granulocyte differentiation (O'Donnell et al., 2002 [PubMed 12223515]).[supplied by OMIM]
--------------	---

Other Designations	1300008B03Rik 2310031E04Rik leucine rich alpha 2 glycoprotein
--------------------	---