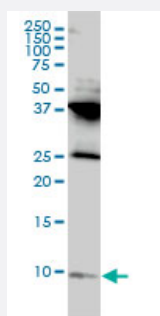


RPL39L monoclonal antibody (M01), clone 4A8-1B6

Catalog # H00116832-M01

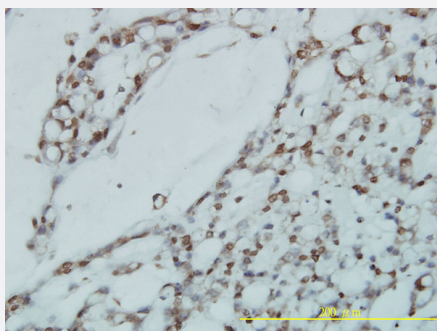
Size 100 ug

Applications



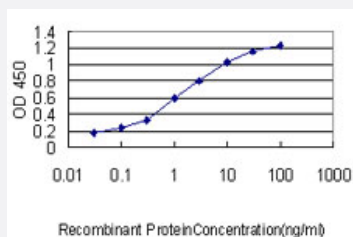
Western Blot (Cell lysate)

RPL39L monoclonal antibody (M01), clone 4A8-1B6 Western Blot analysis of RPL39L expression in HL-60 (Cat # L014V1).



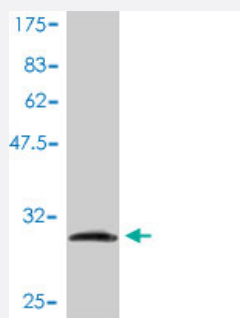
Immunohistochemistry (Formalin/PFA-fixed paraffin-embedded sections)

Immunoperoxidase of monoclonal antibody to RPL39L on formalin-fixed paraffin-embedded human ovary, clear cell carcinoma tissue. [antibody concentration 1 ug/ml]



Sandwich ELISA (Recombinant protein)

Detection limit for recombinant GST tagged RPL39L is approximately 0.1ng/ml as a capture antibody.



Western Blot detection against Immunogen (31.35 KDa) .

Specification

Product Description	Mouse monoclonal antibody raised against a full length recombinant RPL39L.
Immunogen	RPL39L (AAH12328, 1 a.a. ~ 51 a.a) full-length recombinant protein with GST tag. MW of the GST tag alone is 26 KDa.
Sequence	MSSHKTFIKRFLAKKQKQNRPIQWQMKGSKIRYNSKRRHWRRTKLGL
Host	Mouse
Reactivity	Human
Isotype	IgG1 kappa
Quality Control Testing	Antibody Reactive Against Recombinant Protein. Western Blot detection against Immunogen (31.35 KDa) .
Storage Buffer	In 1x PBS, pH 7.4
Storage Instruction	Store at -20°C or lower. Aliquot to avoid repeated freezing and thawing.

Applications

- Western Blot (Cell lysate)

RPL39L monoclonal antibody (M01), clone 4A8-1B6 Western Blot analysis of RPL39L expression in HL-60 (Cat # L014V1).

[Protocol Download](#)

- Western Blot (Recombinant protein)

[Protocol Download](#)

- Immunohistochemistry (Formalin/PFA-fixed paraffin-embedded sections)

Immunoperoxidase of monoclonal antibody to RPL39L on formalin-fixed paraffin-embedded human ovary, clear cell carcinoma tissue. [antibody concentration 1 ug/ml]

[Protocol Download](#)

- Sandwich ELISA (Recombinant protein)

Detection limit for recombinant GST tagged RPL39L is approximately 0.1ng/ml as a capture antibody.

[Protocol Download](#)

- ELISA

Gene Info — RPL39L

Entrez GeneID [116832](#)

GeneBank Accession# [BC012328](#)

Protein Accession# [AAH12328](#)

Gene Name RPL39L

Gene Alias RPL39L1

Gene Description ribosomal protein L39-like

Omim ID [607547](#)

Gene Ontology [Hyperlink](#)

Gene Summary This gene encodes a protein sharing high sequence similarity with ribosomal protein L39. Although the name of this gene has been referred to as 'ribosomal protein L39' in the public databases, its official name is 'ribosomal protein L39-like'. It is not currently known whether the encoded protein is a functional ribosomal protein or whether it has evolved a function that is independent of the ribosome. [provided by RefSeq]

Other Designations ribosomal protein L39-like 1|ribosomal protein L39-like protein