

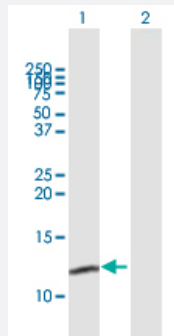
MaxPab®

MRPL54 purified MaxPab mouse polyclonal antibody (B01P)

Catalog # H00116541-B01P

Size 50 ug

Applications



Western Blot (Transfected lysate)

Western Blot analysis of MRPL54 expression in transfected 293T cell line by MRPL54 MaxPab polyclonal antibody.

Lane 1: MRPL54 transfected lysate(15.18 KDa).

Lane 2: Non-transfected lysate.

Specification

Product Description	Mouse polyclonal antibody raised against a full-length human MRPL54 protein.
Immunogen	MRPL54 (NP_758455, 1 a.a. ~ 138 a.a) full-length human protein.
Sequence	MATKRLFGATRTWAGWGAWELLNPATSGRLLARDYAKKPVMKGAKSGKGAVTSEALKDPDVC TDPVQLTTYAMGVNHYKEGQDVPLKPDAEYPEWLFEMNLGPPKLEELDPESREYWRRLRKQNI WRHNRLSKNKRL
Host	Mouse
Reactivity	Human
Interspecies Antigen Sequence	Mouse (68); Rat (69)
Quality Control Testing	Antibody reactive against mammalian transfected lysate.
Storage Buffer	In 1x PBS, pH 7.4
Storage Instruction	Store at -20°C or lower. Aliquot to avoid repeated freezing and thawing.

Applications

- Western Blot (Transfected lysate)

Western Blot analysis of MRPL54 expression in transfected 293T cell line by MRPL54 MaxPab polyclonal antibody.

Lane 1: MRPL54 transfected lysate(15.18 KDa).

Lane 2: Non-transfected lysate.

[Protocol Download](#)

Gene Info — MRPL54

Entrez GeneID [116541](#)

GeneBank Accession# [NM_172251](#)

Protein Accession# [NP_758455](#)

Gene Name MRPL54

Gene Alias -

Gene Description mitochondrial ribosomal protein L54

Gene Ontology [Hyperlink](#)

Gene Summary Mammalian mitochondrial ribosomal proteins are encoded by nuclear genes and help in protein synthesis within the mitochondrion. Mitochondrial ribosomes (mitoribosomes) consist of a small 28 S subunit and a large 39S subunit. They have an estimated 75% protein to rRNA composition compared to prokaryotic ribosomes, where this ratio is reversed. Another difference between mammalian mitoribosomes and prokaryotic ribosomes is that the latter contain a 5S rRNA. Among different species, the proteins comprising the mitoribosome differ greatly in sequence, and sometimes in biochemical properties, which prevents easy recognition by sequence homology. This gene encodes a 39S subunit protein. [provided by RefSeq]

Other Designations -