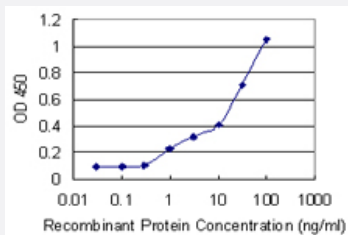


RAB39B monoclonal antibody (M02), clone 3B7

Catalog # H00116442-M02

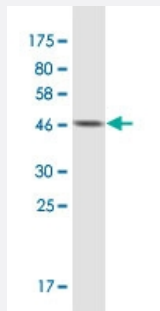
Size 100 ug

Applications



Sandwich ELISA (Recombinant protein)

Detection limit for recombinant GST tagged RAB39B is 0.3 ng/ml as a capture antibody.



Western Blot detection against Immunogen (49.17 KDa) .

Specification

Product Description	Mouse monoclonal antibody raised against a full-length recombinant RAB39B.
Immunogen	RAB39B (AAH09714, 1 a.a. ~ 213 a.a) full-length recombinant protein with GST tag. MW of the GST tag alone is 26 KDa.
Sequence	MEAMLYQFRLVIGDSTVGKSLIRRFTEGRFAQVSDPTVGVDFFSRLVEIEPGKRIKLQMDTAGQ ERFRSITRAYYRNSVGGLLLFDITNRRSFQNVHEWLEETKVHVQPYQMFVLVGHKCDLDTQRQVT RHEAEKLAAAYGMKYIETSARDAINVEKAFTDLTRDIYELVKRGEITIQEGWEGVKSGFVPPNVVHSS EEVVKSEERRCLC
Host	Mouse
Reactivity	Human

Interspecies Antigen Sequence	Mouse (99)
Isotype	IgG1 Kappa
Quality Control Testing	Antibody Reactive Against Recombinant Protein. Western Blot detection against Immunogen (49.17 KDa) .
Storage Buffer	In 1x PBS, pH 7.4
Storage Instruction	Store at -20°C or lower. Aliquot to avoid repeated freezing and thawing.

Applications

- Western Blot (Recombinant protein)

[Protocol Download](#)

- Sandwich ELISA (Recombinant protein)

Detection limit for recombinant GST tagged RAB39B is 0.3 ng/ml as a capture antibody.

[Protocol Download](#)

- ELISA

Gene Info — RAB39B

Entrez GeneID	116442
GeneBank Accession#	BC009714
Protein Accession#	AAH09714
Gene Name	RAB39B
Gene Alias	-
Gene Description	RAB39B, member RAS oncogene family
Gene Ontology	Hyperlink
Gene Summary	This gene encodes a member of the Rab family of proteins. Rab proteins are small GTPases that are involved in vesicular trafficking. [provided by RefSeq]
Other Designations	OTTHUMP00000024247