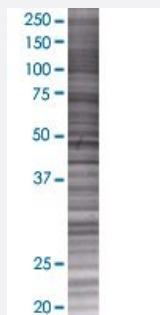


CMTM5 293T Cell Transient Overexpression Lysate(Denatured)

Catalog # H00116173-T01

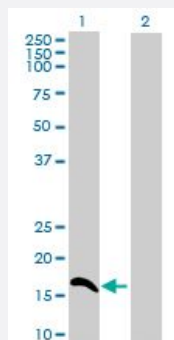
Size 100 uL

Applications



SDS-PAGE Gel

CMTM5 transfected lysate.



Western Blot

Lane 1: CMTM5 transfected lysate (17.27 KDa)

Lane 2: Non-transfected lysate.

Specification

Transfected Cell Line	293T
Plasmid	pCMV-CMTM5 full-length
Host	Human
Theoretical MW (kDa)	17.27
Interspecies Antigen Sequence	Mouse (83); Rat (83)

Quality Control Testing

Transient overexpression cell lysate was tested with Anti-CMTM5 antibody ([H00116173-B01](#)) by Western Blots.
SDS-PAGE Gel
CMTM5 transfected lysate.
Western Blot
Lane 1: CMTM5 transfected lysate (17.27 KDa)
Lane 2: Non-transfected lysate.

Storage Buffer

1X Sample Buffer (50 mM Tris-HCl, 2% SDS, 10% glycerol, 300 mM 2-mercaptoethanol, 0.01% Bromophenol blue)

Storage Instruction

Store at -80°C. Aliquot to avoid repeated freezing and thawing.

Applications

- Western Blot

Gene Info — CMTM5

Entrez GeneID[116173](#)**GeneBank Accession#**[NM_138460](#)**Protein Accession#**[NP_612469](#)**Gene Name**

CMTM5

Gene Alias

CKLFSF5, FLJ37521

Gene Description

CKLF-like MARVEL transmembrane domain containing 5

Omim ID[607888](#)**Gene Ontology**[Hyperlink](#)**Gene Summary**

This gene belongs to the chemokine-like factor gene superfamily. This family of genes encodes multi-pass membrane proteins that are similar to both the chemokine and the transmembrane 4 superfamilies of signaling molecules. Alternate transcriptional splice variants of this gene, encoding different isoforms, have been characterized. [provided by RefSeq]

Other Designations

chemokine-like factor super family 5|chemokine-like factor superfamily 5