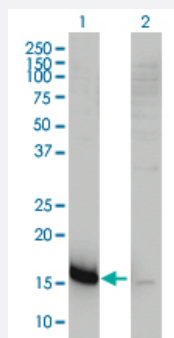


CMTM5 monoclonal antibody (M01), clone 2G1-6B10

Catalog # H00116173-M01

Size 100 ug

Applications

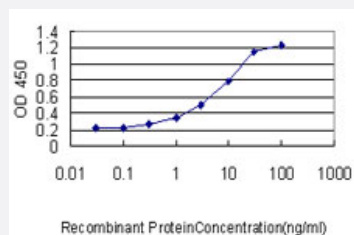


Western Blot (Transfected lysate)

Western Blot analysis of CMTM5 expression in transfected 293T cell line by CKLF5F5 monoclonal antibody (M01), clone 2G1-6B10.

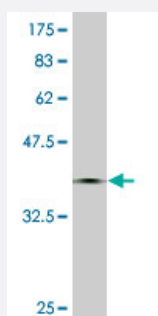
Lane 1: CMTM5 transfected lysate (17 KDa).

Lane 2: Non-transfected lysate.



Sandwich ELISA (Recombinant protein)

Detection limit for recombinant GST tagged CMTM5 is approximately 0.1 ng/ml as a capture antibody.



Western Blot detection against Immunogen (42.9 KDa) .

Specification

Product Description

Mouse monoclonal antibody raised against a full length recombinant CMTM5.

Immunogen	CMTM5 (AAH13109, 1 a.a. ~ 156 a.a) full-length recombinant protein with GST tag. MW of the GST tag alone is 26 KDa.
Sequence	MLSARDRRDRHP EEGVVAELQGFAVDKAF LTSHKGILLETAL TLII FICFTASISAYMAAALLEFFI TLAFLFLYATQYYQRFDRINWPCLDFLRCSAIIIFLVVSFAAVTSRDGAAIAAFVFGIILVSIFAYDAF KIYRTEMAPGASQGDQQ
Host	Mouse
Reactivity	Human
Interspecies Antigen Sequence	Mouse (83); Rat (83)
Isotype	IgG1 kappa
Quality Control Testing	Antibody Reactive Against Recombinant Protein. Western Blot detection against Immunogen (42.9 KDa) .
Storage Buffer	In 1x PBS, pH 7.4
Storage Instruction	Store at -20°C or lower. Aliquot to avoid repeated freezing and thawing.

Applications

- Western Blot (Transfected lysate)

Western Blot analysis of CMTM5 expression in transfected 293T cell line by CKLFSF5 monoclonal antibody (M01), clone 2G1-6B10.

Lane 1: CMTM5 transfected lysate(17 KDa).

Lane 2: Non-transfected lysate.

[Protocol Download](#)

- Western Blot (Recombinant protein)

[Protocol Download](#)

- Sandwich ELISA (Recombinant protein)

Detection limit for recombinant GST tagged CMTM5 is approximately 0.1ng/ml as a capture antibody.

[Protocol Download](#)

- ELISA

Gene Info — CMTM5

Entrez GeneID [116173](#)**GeneBank Accession#** [BC013109](#)**Protein Accession#** [AAH13109](#)**Gene Name** CMTM5**Gene Alias** CKLFSF5, FLJ37521**Gene Description** CKLF-like MARVEL transmembrane domain containing 5**Omim ID** [607888](#)**Gene Ontology** [Hyperlink](#)

Gene Summary This gene belongs to the chemokine-like factor gene superfamily. This family of genes encodes multi-pass membrane proteins that are similar to both the chemokine and the transmembrane 4 superfamilies of signaling molecules. Alternate transcriptional splice variants of this gene, encoding different isoforms, have been characterized. [provided by RefSeq]

Other Designations chemokine-like factor super family 5|chemokine-like factor superfamily 5