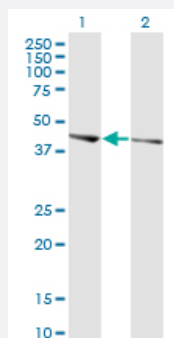


PHACTR3 monoclonal antibody (M02), clone 4A5

Catalog # H00116154-M02

Size 100 ug

Applications

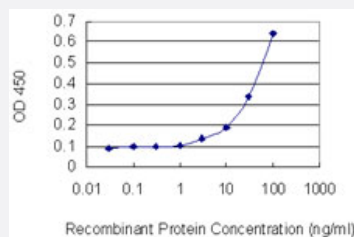


Western Blot (Transfected lysate)

Western Blot analysis of PHACTR3 expression in transfected 293T cell line by PHACTR3 monoclonal antibody (M02), clone 4A5.

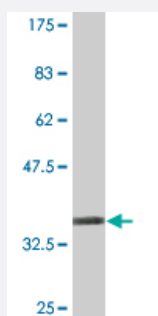
Lane 1: PHACTR3 transfected lysate (51.5 KDa).

Lane 2: Non-transfected lysate.



Sandwich ELISA (Recombinant protein)

Detection limit for recombinant GST tagged PHACTR3 is 1 ng/ml as a capture antibody.



Western Blot detection against Immunogen (35.42 KDa) .

Specification

Product Description

Mouse monoclonal antibody raised against a partial recombinant PHACTR3.

Immunogen	PHACTR3 (NP_542403.1, 92 a.a. ~ 179 a.a) partial recombinant protein with GST tag. MW of the GST tag alone is 26 KDa.
Sequence	TSALEKKMAGRQGREELIKKGLLEMMEQDAESKTCNPDGGPRSVQSEPPTPKSETLTSEDAQP GSPLATGTDQVSLDKPLSSAAHLDD
Host	Mouse
Reactivity	Human
Interspecies Antigen Sequence	Mouse (75); Rat (76)
Isotype	IgG2a Kappa
Quality Control Testing	Antibody Reactive Against Recombinant Protein. Western Blot detection against Immunogen (35.42 KDa) .
Storage Buffer	In 1x PBS, pH 7.4
Storage Instruction	Store at -20°C or lower. Aliquot to avoid repeated freezing and thawing.

Applications

- Western Blot (Transfected lysate)

Western Blot analysis of PHACTR3 expression in transfected 293T cell line by PHACTR3 monoclonal antibody (M02), clone 4A5.

Lane 1: PHACTR3 transfected lysate(51.5 KDa).

Lane 2: Non-transfected lysate.

[Protocol Download](#)

- Western Blot (Recombinant protein)

[Protocol Download](#)

- Sandwich ELISA (Recombinant protein)

Detection limit for recombinant GST tagged PHACTR3 is 1 ng/ml as a capture antibody.

[Protocol Download](#)

- ELISA

Gene Info — PHACTR3

Entrez GeneID	116154
GeneBank Accession#	NM_080672
Protein Accession#	NP_542403.1
Gene Name	PHACTR3
Gene Alias	C20orf101, H17739, MGC117178, SCAPIN1, SCAPININ
Gene Description	phosphatase and actin regulator 3
Omim ID	608725
Gene Ontology	Hyperlink
Gene Summary	The protein encoded by this gene is associated with the nuclear scaffold in proliferating cells. It was found to bind to the catalytic subunit of protein phosphatase-1 (PP1) and inhibit PP1 activity, suggesting that this protein may function as a regulatory subunit of PP1. Alternative splicing at this locus results in several transcript variants encoding different isoforms. [provided by RefSeq]
Other Designations	OTTHUMP00000031424 OTTHUMP00000174466 OTTHUMP00000174467 phosphatase and actin regulator 3, isoform 1 scaffold-associated PP1 inhibiting protein

Disease

- [Cardiovascular Diseases](#)
- [Diabetes Mellitus](#)
- [Edema](#)
- [Tobacco Use Disorder](#)