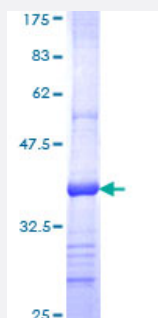


# KLHDC3 (Human) Recombinant Protein (Q01)

Catalog # H00116138-Q01

Size 25 ug, 10 ug

## Applications



## Specification

<b>Product Description</b>	Human KLHDC3 partial ORF ( NP_476502, 1 a.a. - 102 a.a.) recombinant protein with GST-tag at N-terminal.
<b>Sequence</b>	MLRWTVHLEGGPRRVNHA AVAVGHRVYSFGGYCSGEDYETLRQIDVHIFNAVSLRWTKLPPVKS AIRGQAPVVPYMRYGHSTVLIDDTVLLWGGRNDTEGAC
<b>Host</b>	Wheat Germ (in vitro)
<b>Theoretical MW (kDa)</b>	36.96
<b>Interspecies Antigen Sequence</b>	Mouse (96); Rat (97)
<b>Preparation Method</b>	<a href="#">in vitro wheat germ expression system</a>
<b>Purification</b>	Glutathione Sepharose 4 Fast Flow
<b>Quality Control Testing</b>	12.5% SDS-PAGE Stained with Coomassie Blue.
<b>Storage Buffer</b>	50 mM Tris-HCl, 10 mM reduced Glutathione, pH=8.0 in the elution buffer.
<b>Storage Instruction</b>	Store at -80°C. Aliquot to avoid repeated freezing and thawing.
<b>Note</b>	Best use within three months from the date of receipt of this protein.

## Applications

- Enzyme-linked Immunoabsorbent Assay
- Western Blot (Recombinant protein)
- Antibody Production
- Protein Array

## Gene Info — KLHDC3

Entrez GeneID [116138](#)

GeneBank Accession# [NM\\_057161](#)

Protein Accession# [NP\\_476502](#)

Gene Name KLHDC3

Gene Alias PEAS, RP1-20C7.3, dJ20C7.3, hPEAS

Gene Description kelch domain containing 3

Omim ID [611248](#)

Gene Ontology [Hyperlink](#)

**Gene Summary** The protein encoded by this gene contains six repeated kelch motifs that are structurally similar to recombination activating gene 2 (RAG2), a protein involved in the activation of the V(D)J recombination. In mouse, this gene is found to express specifically in testis. Its expression in pachytene spermatocytes is localized to cytoplasm and meiotic chromatin, which suggests that this gene may be involved in meiotic recombination. [provided by RefSeq]

**Other Designations** OTTHUMP00000039827|testis intracellular mediator protein