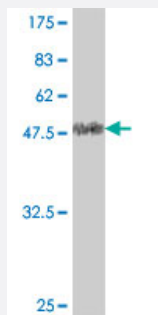


KLHDC3 polyclonal antibody (A02)

Catalog # H00116138-A02

Size 50 uL

Applications



Western Blot detection against Immunogen (55.37 KDa) .

Specification

Product Description	Mouse polyclonal antibody raised against a full-length recombinant KLHDC3.
Immunogen	KLHDC3 (AAH45612, 1 a.a. ~ 266 a.a) full-length recombinant protein with GST tag.
Sequence	MDTQPSSSTTQSSFGAGGMTPKGPAMCSMPLTSADCF SNDIHKLDTSTMTWTLICTKGSPARWR DFHSATMLGSHMYVFGGRADRF GPFHSNNEIYCNRI RVFDTRTEAWLDCPPTPVLP EGRRSHSA FGYNGELYIFGGYNARLNWHFHDLWKFN PVSFTWKKIEPKGKGPCPRRRQCCCVGDKMLFGGT SPSPEEGLGDEFDLIDHSDLHILDFSPSLKTLCKLAVIQYNLDQSCLPHDIRWELNAMTTNSNISRP I VSSHG
Host	Mouse
Reactivity	Human
Interspecies Antigen Sequence	Mouse (96); Rat (97)
Quality Control Testing	Antibody Reactive Against Recombinant Protein. Western Blot detection against Immunogen (55.37 KDa) .
Storage Buffer	50 % glycerol
Storage Instruction	Store at -20°C or lower. Aliquot to avoid repeated freezing and thawing.

Applications

- Western Blot (Recombinant protein)

[Protocol Download](#)

- ELISA

Gene Info — KLHDC3

Entrez GeneID [116138](#)

GeneBank Accession# [BC045612](#)

Protein Accession# [AAH45612](#)

Gene Name KLHDC3

Gene Alias PEAS, RP1-20C7.3, dJ20C7.3, hPEAS

Gene Description kelch domain containing 3

Omim ID [611248](#)

Gene Ontology [Hyperlink](#)

Gene Summary The protein encoded by this gene contains six repeated kelch motifs that are structurally similar to recombination activating gene 2 (RAG2), a protein involved in the activation of the V(D)J recombination. In mouse, this gene is found to express specifically in testis. Its expression in pachytene spermatocytes is localized to cytoplasm and meiotic chromatin, which suggests that this gene may be involved in meiotic recombination. [provided by RefSeq]

Other Designations OTTHUMP00000039827|testis intracellular mediator protein