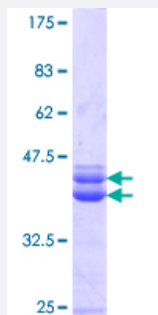


FOXP4 (Human) Recombinant Protein (Q01)

Catalog # H00116113-Q01

Size 25 ug, 10 ug

Applications



Specification

Product Description	Human FOXP4 partial ORF (NP_001012426.1, 586 a.a. - 679 a.a.) recombinant protein with GST-tag at N-terminal.
Sequence	LNSPGMLNPGSASSLLPLSHDDVGAPVEPLPSNGSSSPRLSPPQYSHQVQVKEEPAEAEEDR QPGPPLGAPNPSASGPPEDRDLEELPGEEL
Host	Wheat Germ (in vitro)
Theoretical MW (kDa)	36.08
Interspecies Antigen Sequence	Mouse (91); Rat (92)
Preparation Method	in vitro wheat germ expression system
Purification	Glutathione Sepharose 4 Fast Flow
Quality Control Testing	12.5% SDS-PAGE Stained with Coomassie Blue.
Storage Buffer	50 mM Tris-HCl, 10 mM reduced Glutathione, pH=8.0 in the elution buffer.
Storage Instruction	Store at -80°C. Aliquot to avoid repeated freezing and thawing.
Note	Best use within three months from the date of receipt of this protein.

Applications

- Enzyme-linked Immunoabsorbent Assay
- Western Blot (Recombinant protein)
- Antibody Production
- Protein Array

Gene Info — FOXP4

Entrez GeneID	116113
GeneBank Accession#	NM_001012426
Protein Accession#	NP_001012426.1
Gene Name	FOXP4
Gene Alias	FLJ40908, FLJ44184, hFKHLA
Gene Description	forkhead box P4
Omim ID	608924
Gene Ontology	Hyperlink
Gene Summary	This gene belongs to subfamily P of the forkhead box (FOX) transcription factor family. Forkhead box transcription factors play important roles in the regulation of tissue- and cell type-specific gene transcription during both development and adulthood. Many members of the forkhead box gene family, including members of subfamily P, have roles in mammalian oncogenesis. This gene may play a role in the development of tumors of the kidney and larynx. Alternative splicing of this gene produces multiple transcript variants, some encoding different isoforms. [provided by RefSeq]
Other Designations	OTTHUMP00000016374 OTTHUMP00000039784 OTTHUMP00000043412 OTTHUMP00000043536 fork head-related protein like A winged-helix repressor FOXP4

Disease

- [Carcinoma](#)
- [Cardiovascular Diseases](#)

- [Diabetes Mellitus](#)
- [Edema](#)
- [Genetic Predisposition to Disease](#)
- [Prostatic Neoplasms](#)