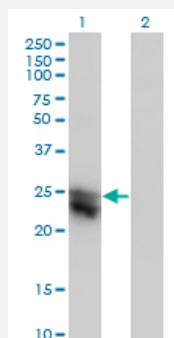


# CTHRC1 monoclonal antibody (M05), clone 1G12

Catalog # H00115908-M05

Size 100 ug

## Applications

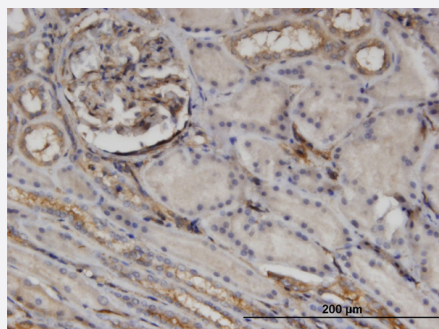


### Western Blot (Transfected lysate)

Western Blot analysis of CTHRC1 expression in transfected 293T cell line by CTHRC1 monoclonal antibody (M05), clone 1G12.

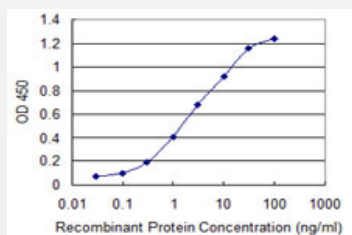
Lane 1: CTHRC1 transfected lysate (26.2 KDa).

Lane 2: Non-transfected lysate.



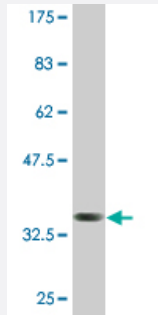
### Immunohistochemistry (Formalin/PFA-fixed paraffin-embedded sections)

Immunoperoxidase of monoclonal antibody to CTHRC1 on formalin-fixed paraffin-embedded human kidney. [antibody concentration 3 ug/ml]



### Sandwich ELISA (Recombinant protein)

Detection limit for recombinant GST tagged CTHRC1 is 0.03 ng/ml as a capture antibody.



Western Blot detection against Immunogen (37.62 KDa) .

## Specification

<b>Product Description</b>	Mouse monoclonal antibody raised against a partial recombinant CTHRC1.
<b>Immunogen</b>	CTHRC1 (NP_612464, 32 a.a. ~ 141 a.a) partial recombinant protein with GST tag. MW of the GST tag alone is 26 KDa.
<b>Sequence</b>	EIPK GKQKAQLRQREVVDLYNGMCLQGPA GVPGRDGSPGANGIPGTPGIPGRDGFKGEGECLRESFEESWTPNYKQCSWSSLNYGIDLGKIAECTFTKMRSNSALRVLF
<b>Host</b>	Mouse
<b>Reactivity</b>	Human
<b>Interspecies Antigen Sequence</b>	Mouse (93); Rat (94)
<b>Isotype</b>	IgG2a Kappa
<b>Quality Control Testing</b>	Antibody Reactive Against Recombinant Protein. Western Blot detection against Immunogen (37.62 KDa) .
<b>Storage Buffer</b>	In 1x PBS, pH 7.4
<b>Storage Instruction</b>	Store at -20°C or lower. Aliquot to avoid repeated freezing and thawing.

## Applications

### ● Western Blot (Transfected lysate)

Western Blot analysis of CTHRC1 expression in transfected 293T cell line by CTHRC1 monoclonal antibody (M05), clone 1G12.

Lane 1: CTHRC1 transfected lysate(26.2 KDa).

Lane 2: Non-transfected lysate.

[Protocol Download](#)

- Western Blot (Recombinant protein)

[Protocol Download](#)

- Immunohistochemistry (Formalin/PFA-fixed paraffin-embedded sections)

Immunoperoxidase of monoclonal antibody to CTHRC1 on formalin-fixed paraffin-embedded human kidney. [antibody concentration 3 ug/ml]

[Protocol Download](#)

- Sandwich ELISA (Recombinant protein)

Detection limit for recombinant GST tagged CTHRC1 is 0.03 ng/ml as a capture antibody.

[Protocol Download](#)

- ELISA

## Gene Info — CTHRC1

Entrez GeneID [115908](#)

GeneBank Accession# [NM\\_138455](#)

Protein Accession# [NP\\_612464](#)

Gene Name CTHRC1

Gene Alias -

Gene Description collagen triple helix repeat containing 1

Omim ID [610635](#)

Gene Ontology [Hyperlink](#)

**Gene Summary** CTHRC1 is specifically expressed in vascular calcifications of carotid artery lesions and may contribute to vascular remodeling of injured arteries (Pyagay et al., 2005 [PubMed 15618538]).[supplied by OMIM]

Other Designations -

## Publication Reference

- [Collagen Triple Helix Repeat Containing-1 \(CTHRC1\) Expression in Invasive Ductal Carcinoma of the Breast: The Impact on Prognosis and Correlation to Clinicopathologic Features.](#)

Kim JH, Baek TH, Yim HS, Kim KH, Jeong SH, Kang HB, Oh SS, Lee HG, Kim JW, Kim KD.

Pathology Oncology Research 2013 Oct; 19(4):731.

Application: IHC-P, Human, Breast cancer

## Disease

- [Genetic Predisposition to Disease](#)
- [Thyroid Neoplasms](#)