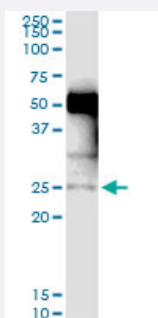


NXNL1 (Human) IP-WB Antibody Pair

Catalog # H00115861-PW2

Size 1 Set

Applications



Immunoprecipitation of NXNL1 transfected lysate using rabbit polyclonal anti-NXNL1 and Protein A Magnetic Bead ([U0007](#)), and immunoblotted with mouse purified polyclonal anti-NXNL1.

Specification

Product Description	This IP-WB antibody pair set comes with one antibody for immunoprecipitation and another to detect the precipitated protein in western blot.
Reactivity	Human
Quality Control Testing	Immunoprecipitation-Western Blot (IP-WB) Immunoprecipitation of NXNL1 transfected lysate using rabbit polyclonal anti-NXNL1 and Protein A Magnetic Bead (U0007), and immunoblotted with mouse purified polyclonal anti-NXNL1.
Supplied Product	Antibody pair set content: 1. Antibody pair for IP: rabbit polyclonal anti-NXNL1 (300 ul) 2. Antibody pair for WB: mouse purified polyclonal anti-NXNL1 (50 ug)
Storage Instruction	Store reagents of the antibody pair set at -20°C or lower. Please aliquot to avoid repeated freeze thaw cycle. Reagents should be returned to -20°C storage immediately after use.

Applications

- Immunoprecipitation-Western Blot

[Protocol Download](#)

Gene Info — NXNL1

Entrez GeneID	115861
Gene Name	NXNL1
Gene Alias	RDCVF, TXNL6
Gene Description	nucleoredoxin-like 1
Omim ID	608791
Gene Ontology	Hyperlink
Other Designations	rod-derived cone viability factor thioredoxin-like 6

Disease

- [Bardet-Biedl Syndrome](#)