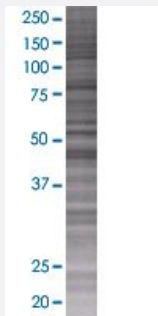


WDFY2 293T Cell Transient Overexpression Lysate(Denatured)

Catalog # H00115825-T01

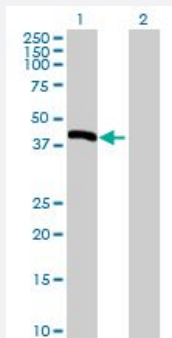
Size 100 uL

Applications



SDS-PAGE Gel

WDFY2 transfected lysate.



Western Blot

Lane 1: WDFY2 transfected lysate (45.2 KDa)

Lane 2: Non-transfected lysate.

Specification

Transfected Cell Line	293T
Plasmid	pCMV-WDFY2 full-length
Host	Human
Theoretical MW (kDa)	45.2
Interspecies Antigen Sequence	Mouse (98); Rat (98)

Quality Control Testing

Transient overexpression cell lysate was tested with Anti-WDFY2 antibody ([H00115825-B01](#)) by Western Blots.
SDS-PAGE Gel
WDFY2 transfected lysate.
Western Blot
Lane 1: WDFY2 transfected lysate (45.2 KDa)
Lane 2: Non-transfected lysate.

Storage Buffer

1X Sample Buffer (50 mM Tris-HCl, 2% SDS, 10% glycerol, 300 mM 2-mercaptoethanol, 0.01% Bromophenol blue)

Storage Instruction

Store at -80°C. Aliquot to avoid repeated freezing and thawing.

Applications

- Western Blot

Gene Info — WDFY2

Entrez GeneID[115825](#)**GeneBank Accession#**[NM_052950](#)**Protein Accession#**[NP_443182](#)**Gene Name**

WDFY2

Gene Alias

PROF, RP11-147H23.1, WDF2, ZFYVE22

Gene Description

WD repeat and FYVE domain containing 2

Omim ID[610418](#)**Gene Ontology**[Hyperlink](#)**Gene Summary**

This gene encodes a protein that contains two WD domains and an FYVE zinc finger region. The function of this gene is unknown. An alternatively spliced transcript variant of this gene may exist. [provided by RefSeq]

Other Designations

OTTHUMP00000018795|WD40 and FYVE domain containing 2|propeller-FYVE protein