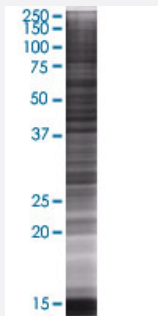


FCRL1 293T Cell Transient Overexpression Lysate(Denatured)

Catalog # H00115350-T01

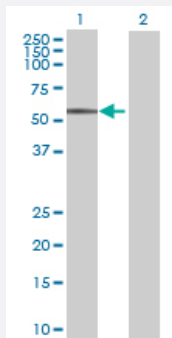
Size 100 uL

Applications



SDS-PAGE Gel

FCRL1 transfected lysate.



Western Blot

Lane 1: FCRL1 transfected lysate (47.3 KDa)

Lane 2: Non-transfected lysate.

Specification

Transfected Cell Line 293T

Plasmid pCMV-FCRL1 full-length

Host Human

Theoretical MW (kDa) 47.3

Quality Control Testing Transient overexpression cell lysate was tested with Anti-FCRL1 antibody ([H00115350-B01](#)) by Western Blots.
SDS-PAGE Gel
FCRL1 transfected lysate.
Western Blot
Lane 1: FCRL1 transfected lysate (47.3 KDa)
Lane 2: Non-transfected lysate.

Storage Buffer	1X Sample Buffer (50 mM Tris-HCl, 2% SDS, 10% glycerol, 300 mM 2-mercaptoethanol, 0.01% Bromophenol blue)
Storage Instruction	Store at -80°C. Aliquot to avoid repeated freezing and thawing.

Applications

- Western Blot

Gene Info — FCRL1

Entrez GeneID	115350
GeneBank Accession#	NM_052938.3
Protein Accession#	NP_443170.1
Gene Name	FCRL1
Gene Alias	DKFZp667O1421, FCRH1, IFGP1, IRTA5, RP11-367J7.7
Gene Description	Fc receptor-like 1
Omim ID	606508
Gene Ontology	Hyperlink
Gene Summary	This gene encodes a member of the immunoglobulin receptor superfamily and is one of several Fc receptor-like glycoproteins clustered on the long arm of chromosome 1. The encoded protein contains three extracellular C2-like immunoglobulin domains, a transmembrane domain and a cytoplasmic domain with two immunoreceptor-tyrosine activation motifs. This protein may play a role in the regulation of cancer cell growth. Alternative splicing results in multiple transcript variants. [provided by RefSeq]
Other Designations	Fc receptor-like protein 1 (FCRH1) OTTHUMP00000020924

Disease

- [Tobacco Use Disorder](#)