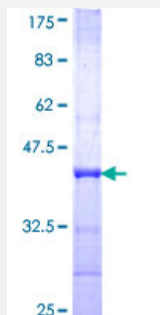


FCRL1 (Human) Recombinant Protein (Q01)

Catalog # H00115350-Q01

Size 25 ug, 10 ug

Applications



Specification

Product Description	Human FCRL1 partial ORF (NP_443170, 23 a.a. - 117 a.a.) recombinant protein with GST-tag at N-terminal.
Sequence	ASPSHPTGSPVTLTCKMPFLQSSDAQFQFCFFRDTRALGPGWSSSPKLQIAAMWKEDTGSYW CEAQTMASKVLRSSRSQINVHRVPVADVLET
Host	Wheat Germ (in vitro)
Theoretical MW (kDa)	36.19
Preparation Method	in vitro wheat germ expression system
Purification	Glutathione Sepharose 4 Fast Flow
Quality Control Testing	12.5% SDS-PAGE Stained with Coomassie Blue.
Storage Buffer	50 mM Tris-HCl, 10 mM reduced Glutathione, pH=8.0 in the elution buffer.
Storage Instruction	Store at -80°C. Aliquot to avoid repeated freezing and thawing.
Note	Best use within three months from the date of receipt of this protein.

Applications

- Enzyme-linked Immunoabsorbent Assay
- Western Blot (Recombinant protein)
- Antibody Production
- Protein Array

Gene Info — FCRL1

Entrez GeneID [115350](#)

GeneBank Accession# [NM_052938](#)

Protein Accession# [NP_443170](#)

Gene Name FCRL1

Gene Alias DKFZp667O1421, FCRH1, IFGP1, IRTA5, RP11-367J7.7

Gene Description Fc receptor-like 1

Omim ID [606508](#)

Gene Ontology [Hyperlink](#)

Gene Summary This gene encodes a member of the immunoglobulin receptor superfamily and is one of several Fc receptor-like glycoproteins clustered on the long arm of chromosome 1. The encoded protein contains three extracellular C2-like immunoglobulin domains, a transmembrane domain and a cytoplasmic domain with two immunoreceptor-tyrosine activation motifs. This protein may play a role in the regulation of cancer cell growth. Alternative splicing results in multiple transcript variants. [provided by RefSeq]

Other Designations Fc receptor-like protein 1 (FCRH1)|OTTHUMP00000020924

Disease

- [Tobacco Use Disorder](#)