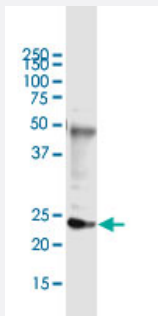


# DDIT4L (Human) IP-WB Antibody Pair

Catalog # H00115265-PW2

Size 1 Set

## Applications



Immunoprecipitation of DDIT4L transfected lysate using mouse monoclonal anti-DDIT4L and Protein A Magnetic Bead ([U0007](#)), and immunoblotted with rabbit polyclonal anti-DDIT4L.

## Specification

<b>Product Description</b>	This IP-WB antibody pair set comes with one antibody for immunoprecipitation and another to detect the precipitated protein in western blot.
<b>Reactivity</b>	Human
<b>Interspecies Antigen Sequence</b>	Mouse (93); Rat (93)
<b>Quality Control Testing</b>	Immunoprecipitation-Western Blot (IP-WB) Immunoprecipitation of DDIT4L transfected lysate using mouse monoclonal anti-DDIT4L and Protein A Magnetic Bead ( <a href="#">U0007</a> ), and immunoblotted with rabbit polyclonal anti-DDIT4L.
<b>Supplied Product</b>	Antibody pair set content: 1. Antibody pair for IP: mouse monoclonal anti-DDIT4L (300 ug) 2. Antibody pair for WB: rabbit polyclonal anti-DDIT4L (50 ul)
<b>Storage Instruction</b>	Store reagents of the antibody pair set at -20°C or lower. Please aliquot to avoid repeated freeze thaw cycle. Reagents should be returned to -20°C storage immediately after use.

## Applications

- Immunoprecipitation-Western Blot

[Protocol Download](#)

## Gene Info — DDIT4L

Entrez GeneID	<a href="#">115265</a>
Gene Name	DDIT4L
Gene Alias	REDD2, Rtp801L
Gene Description	DNA-damage-inducible transcript 4-like
Omim ID	<a href="#">607730</a>
Gene Ontology	<a href="#">Hyperlink</a>
Other Designations	homolog of mouse SMHS1 regulated in development and DNA damage response 2