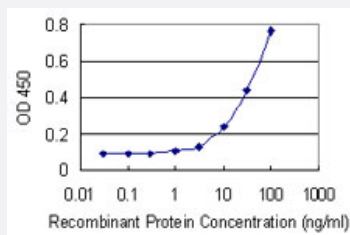


# SLC26A9 monoclonal antibody (M02), clone 4E9

Catalog # H00115019-M02

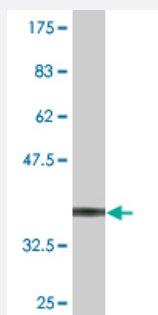
Size 100 ug

## Applications



### Sandwich ELISA (Recombinant protein)

Detection limit for recombinant GST tagged SLC26A9 is 1 ng/ml as a capture antibody.



Western Blot detection against Immunogen (37.84 KDa) .

## Specification

<b>Product Description</b>	Mouse monoclonal antibody raised against a partial recombinant SLC26A9.
<b>Immunogen</b>	SLC26A9 (NP_443166, 496 a.a. ~ 605 a.a) partial recombinant protein with GST tag. MW of the GST tag alone is 26 KDa.
<b>Sequence</b>	QTQFRNGYALAQVMDTDIYVNPPTYNRAQDIQGIKITYCSPLYFANSEIFRQKVIKTGMDPQKVLLAKQKYLKKQEKRRMRPTQQRRSLFMKTKTVSLQELQQDFENA
<b>Host</b>	Mouse
<b>Reactivity</b>	Human

Interspecies Antigen Sequence	Mouse (89); Rat (88)
Isotype	IgG2b Kappa
Quality Control Testing	Antibody Reactive Against Recombinant Protein. Western Blot detection against Immunogen (37.84 KDa) .
Storage Buffer	In 1x PBS, pH 7.4
Storage Instruction	Store at -20°C or lower. Aliquot to avoid repeated freezing and thawing.

## Applications

- Western Blot (Recombinant protein)

[Protocol Download](#)

- Sandwich ELISA (Recombinant protein)

Detection limit for recombinant GST tagged SLC26A9 is 1 ng/ml as a capture antibody.

[Protocol Download](#)

- ELISA

## Gene Info — SLC26A9

Entrez GeneID	<a href="#">115019</a>
GeneBank Accession#	<a href="#">NM_052934</a>
Protein Accession#	<a href="#">NP_443166</a>
Gene Name	SLC26A9
Gene Alias	-
Gene Description	solute carrier family 26, member 9
Omim ID	<a href="#">608481</a>
Gene Ontology	<a href="#">Hyperlink</a>

**Gene Summary**

This gene is one member of a family of sulfate/anion transporter genes. Family members are well conserved in their genomic (number and size of exons) and protein (aa length among species) structures yet have markedly different tissue expression patterns. The product of this gene is a highly selective chloride ion channel regulated by WNK kinases. Alternative splicing results in multiple transcript variants encoding differing isoforms

**Other Designations**

OTTHUMP00000034236|OTTHUMP00000034326|anion transporter/exchanger-9

**Disease**

- [Hepatitis C](#)