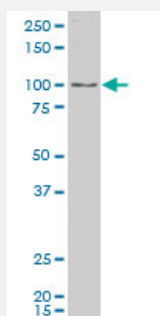


SLC26A9 polyclonal antibody (A01)

Catalog # H00115019-A01

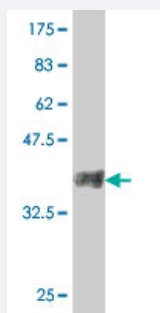
Size 50 uL

Applications



Western Blot (Cell lysate)

SLC26A9 polyclonal antibody (A01), Lot # 060717JCS1. Western Blot analysis of SLC26A9 expression in Daoy.



Western Blot detection against Immunogen (38.21 KDa) .

Specification

Product Description	Mouse polyclonal antibody raised against a partial recombinant SLC26A9.
Immunogen	SLC26A9 (NP_443166, 496 a.a. ~ 605 a.a) partial recombinant protein with GST tag.
Sequence	QTQFRNGYALAQVMDTDIYVNPPTYNRAQDIQGIKITYCSPLYFANSEIFRQKVIAKTGMDPQKVLLAKQKYLKKQEKRMRPTQQRSLFMKTKTVSLQELQQDFENA
Host	Mouse
Reactivity	Human
Interspecies Antigen Sequence	Mouse (89); Rat (88)

Quality Control Testing

Antibody Reactive Against Recombinant Protein.
Western Blot detection against Immunogen (38.21 KDa) .

Storage Buffer

50 % glycerol

Storage Instruction

Store at -20°C or lower. Aliquot to avoid repeated freezing and thawing.

Applications

- Western Blot (Cell lysate)

SLC26A9 polyclonal antibody (A01), Lot # 060717JCS1. Western Blot analysis of SLC26A9 expression in Daoy.

[Protocol Download](#)

- Western Blot (Recombinant protein)

[Protocol Download](#)

- ELISA

Gene Info — SLC26A9

Entrez GeneID

[115019](#)

GeneBank Accession#

[NM_052934](#)

Protein Accession#

[NP_443166](#)

Gene Name

SLC26A9

Gene Alias

-

Gene Description

solute carrier family 26, member 9

Omim ID

[608481](#)

Gene Ontology

[Hyperlink](#)

Gene Summary

This gene is one member of a family of sulfate/anion transporter genes. Family members are well conserved in their genomic (number and size of exons) and protein (aa length among species) structures yet have markedly different tissue expression patterns. The product of this gene is a highly selective chloride ion channel regulated by WNK kinases. Alternative splicing results in multiple transcript variants encoding differing isoforms

Other Designations

OTTHUMP00000034236|OTTHUMP00000034326|anion transporter/exchanger-9

Publication Reference

- [The SLC26A9 inhibitor S9-A13 provides no evidence for a role of SLC26A9 in airway chloride secretion but suggests a contribution to regulation of ASL pH and gastric proton secretion.](#)

Sungwoo Jo, Raquel Centeio, Jinhong Park, Jiraporn Ousingsawat, Dong-Kyu Jeon, Khaoula Talbi, Rainer Schreiber, Kunhi Ryu, Kristin Kahlenberg, Veronika Somoza, Livia Delpiano, Michael A Gray, Margarida D Amaral, Violeta Railean, Jeffrey M Beekman, Lisa W Rodenburg, Wan Namkung, Karl Kunzelmann.

FASEB Journal 2022 Nov; 36(11):e22534.

Application: WB-Ce, Human, LN215 cells

- [Nedd4-2 does not regulate wt-CFTR in human airway epithelial cells.](#)

Koeppen K, Chapline C, Sato JD, Stanton BA.

American Journal of Physiology. Lung Cellular and Molecular Physiology 2012 Oct; 303(8):L720.

Application: WB-Tr, Human, Human airway epithelial cells

Disease

- [Hepatitis C](#)