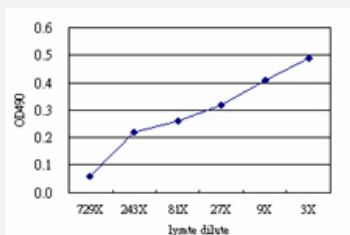


C1QTNF2 (Human) Matched Antibody Pair

Catalog # H00114898-AP51

Size 1 Set

Applications



Sandwich ELISA detection sensitivity ranging from approximately 243x to 3x dilution of the C1QTNF2 293T overexpression lysate (non-denatured).

Specification

| | |
|--------------------------------------|--|
| Product Description | This antibody pair set comes with a matched antibody pair to detect and quantify the protein level of human C1QTNF2. |
| Reactivity | Human |
| Interspecies Antigen Sequence | Mouse (94); Rat (94) |
| Quality Control Testing | Standard curve using C1QTNF2 293T overexpression lysate (non-denatured) as an analyte. Sandwich ELISA detection sensitivity ranging from approximately 243x to 3x dilution of the C1QTNF2 293T overexpression lysate (non-denatured). |
| Supplied Product | Antibody pair set content: 1. Capture antibody: mouse monoclonal anti-C1QTNF2 (100 ug) 2. Detection antibody: rabbit purified polyclonal anti-C1QTNF2 (50 ug) *Reagents are sufficient for at least 3-5 x 96 well plates using recommended protocols. |
| Storage Instruction | Store reagents of the antibody pair set at -20°C or lower. Please aliquot to avoid repeated freeze thaw cycle. Reagents should be returned to -20°C storage immediately after use. |

Applications

- ELISA Pair (Transfected lysate)

[Protocol Download](#)

Gene Info — C1QTNF2

| | |
|---------------|------------------------|
| Entrez GeneID | 114898 |
|---------------|------------------------|

| | |
|-----------|---------|
| Gene Name | C1QTNF2 |
|-----------|---------|

| | |
|------------|--------------|
| Gene Alias | CTRP2, zacr2 |
|------------|--------------|

| | |
|------------------|---|
| Gene Description | C1q and tumor necrosis factor related protein 2 |
|------------------|---|

| | |
|---------------|---------------------------|
| Gene Ontology | Hyperlink |
|---------------|---------------------------|

| | |
|--------------------|--|
| Other Designations | complement-c1q tumor necrosis factor-related protein 2 |
|--------------------|--|