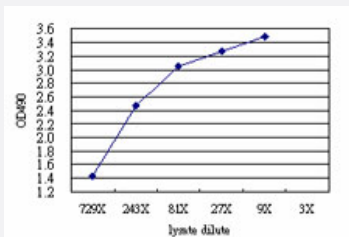


# ERMAP (Human) Matched Antibody Pair

Catalog # H00114625-AP51

Size 1 Set

## Applications



Sandwich ELISA detection sensitivity ranging from approximately 729x to 3x dilution of the ERMAP 293T overexpression lysate (non-denatured).

## Specification

<b>Product Description</b>	This antibody pair set comes with a matched antibody pair to detect and quantify the protein level of human ERMAP.
<b>Reactivity</b>	Human
<b>Quality Control Testing</b>	Standard curve using ERMAP 293T overexpression lysate (non-denatured) as an analyte. Sandwich ELISA detection sensitivity ranging from approximately 729x to 3x dilution of the ERMAP 293T overexpression lysate (non-denatured).
<b>Supplied Product</b>	Antibody pair set content: 1. Capture antibody: mouse monoclonal anti-ERMAP (100 ug) 2. Detection antibody: rabbit purified polyclonal anti-ERMAP (50 ug) *Reagents are sufficient for at least 3-5 x 96 well plates using recommended protocols.
<b>Storage Instruction</b>	Store reagents of the antibody pair set at -20°C or lower. Please aliquot to avoid repeated freeze thaw cycle. Reagents should be returned to -20°C storage immediately after use.

## Applications

- ELISA Pair (Transfected lysate)

[Protocol Download](#)

## Gene Info — ERMAP

**Entrez GeneID** [114625](#)**Gene Name** ERMAP**Gene Alias** MGC118810, MGC118811, MGC118812, MGC118813, PRO2801, RD, SC**Gene Description** erythroblast membrane-associated protein (Scianna blood group)**Omim ID** [111620](#) [111750](#) [609017](#)**Gene Ontology** [Hyperlink](#)

**Gene Summary** The protein encoded by this gene is a cell surface transmembrane protein that may act as an erythroid cell receptor, possibly as a mediator of cell adhesion. Polymorphisms in this gene are responsible for the Scianna/Radin blood group system. Two transcript variants encoding the same protein have been found for this gene. [provided by RefSeq]

**Other Designations** OTTHUMP00000008916|OTTHUMP00000008918|Radin blood group (Rd)|Scianna blood group (Sc)|erythroblast membrane-associated protein|erythroid membrane-associated protein