

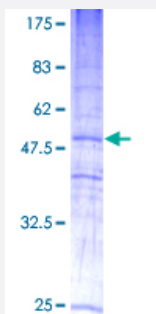
Full-Length

MAL2 (Human) Recombinant Protein (P01)

Catalog # H00114569-P01

Size 2 ug

Applications



Specification

Product Description	Human MAL2 full-length ORF (AAH12367, 1 a.a. - 176 a.a.) recombinant protein with GST-tag at N-terminal.
Sequence	MSAGGASVPPPPNPAVSFPPPRVTLPAAGPDILRTYSGAFVCLEILFGGLVWILVASSNVPLPLLQG WVMFVSVTAFFFSLLFLGMFLSGMVAQIDANWNFLDFAYHFTVFVFYFGAFLLEAAATSLHDLHC NTTITGQPLLSDNQYNINVAASIFAFMTTACYGCSLGLALRRWRP
Host	Wheat Germ (in vitro)
Theoretical MW (kDa)	44.99
Interspecies Antigen Sequence	Mouse (91); Rat (90)
Preparation Method	in vitro wheat germ expression system
Purification	Glutathione Sepharose 4 Fast Flow
Quality Control Testing	12.5% SDS-PAGE Stained with Coomassie Blue.
Storage Buffer	50 mM Tris-HCl, 10 mM reduced Glutathione, pH=8.0 in the elution buffer.
Storage Instruction	Store at -80°C. Aliquot to avoid repeated freezing and thawing.

Note

Best use within three months from the date of receipt of this protein.

Applications

- Enzyme-linked Immunoabsorbent Assay
- Western Blot (Recombinant protein)
- Antibody Production
- Protein Array

Gene Info — MAL2

Entrez GeneID [114569](#)**GeneBank Accession#** [BC012367.1](#)**Protein Accession#** [AAH12367](#)**Gene Name** MAL2**Gene Alias** -**Gene Description** mal, T-cell differentiation protein 2**Omim ID** [609684](#)**Gene Ontology** [Hyperlink](#)

Gene Summary This gene encodes a multispan transmembrane protein belonging to the MAL proteolipid family. The protein is a component of lipid rafts and, in polarized cells, it primarily localizes to endosomal structures beneath the apical membrane. It is required for transcytosis, an intracellular transport pathway used to deliver membrane-bound proteins and exogenous cargos from the basolateral to the apical surface. [provided by RefSeq]

Other Designations MAL proteolipid protein 2|MAL2 proteolipid protein