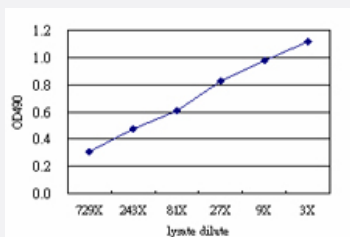


# TOE1 (Human) Matched Antibody Pair

Catalog # H00114034-AP51

Size 1 Set

## Applications



Sandwich ELISA detection sensitivity ranging from approximately 729x to 3x dilution of the TOE1 293T overexpression lysate (non-denatured).

## Specification

<b>Product Description</b>	This antibody pair set comes with a matched antibody pair to detect and quantify the protein level of human TOE1.
<b>Reactivity</b>	Human
<b>Interspecies Antigen Sequence</b>	Mouse (81); Rat (85)
<b>Quality Control Testing</b>	Standard curve using TOE1 293T overexpression lysate (non-denatured) as an analyte. Sandwich ELISA detection sensitivity ranging from approximately 729x to 3x dilution of the TOE1 293T overexpression lysate (non-denatured).
<b>Supplied Product</b>	Antibody pair set content: 1. Capture antibody: mouse monoclonal anti-TOE1 (100 ug) 2. Detection antibody: rabbit purified polyclonal anti-TOE1 (50 ug) *Reagents are sufficient for at least 3-5 x 96 well plates using recommended protocols.
<b>Storage Instruction</b>	Store reagents of the antibody pair set at -20°C or lower. Please aliquot to avoid repeated freeze thaw cycle. Reagents should be returned to -20°C storage immediately after use.

## Applications

- ELISA Pair (Transfected lysate)

[Protocol Download](#)

## Gene Info — TOE1

Entrez GeneID	<a href="#">114034</a>
---------------	------------------------

Gene Name	TOE1
-----------	------

Gene Alias	FLJ13949
------------	----------

Gene Description	target of EGR1, member 1 (nuclear)
------------------	------------------------------------

Gene Ontology	<a href="#">Hyperlink</a>
---------------	---------------------------

Gene Summary	O
--------------	---

Other Designations	OTTHUMP00000009092
--------------------	--------------------