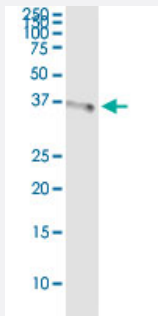


SDSL (Human) IP-WB Antibody Pair

Catalog # H00113675-PW4

Size 1 Set

Applications



Immunoprecipitation of SDSL transfected lysate using rabbit polyclonal anti-SDSL and Protein A Magnetic Bead ([U0007](#)), and immunoblotted with mouse purified polyclonal anti-SDSL.

Specification

| | |
|--------------------------------------|---|
| Product Description | This IP-WB antibody pair set comes with one antibody for immunoprecipitation and another to detect the precipitated protein in western blot. |
| Reactivity | Human |
| Interspecies Antigen Sequence | Mouse (81); Rat (81) |
| Quality Control Testing | Immunoprecipitation-Western Blot (IP-WB) Immunoprecipitation of SDSL transfected lysate using rabbit polyclonal anti-SDSL and Protein A Magnetic Bead (U0007), and immunoblotted with mouse purified polyclonal anti-SDSL. |
| Supplied Product | Antibody pair set content: 1. Antibody pair for IP: rabbit polyclonal anti-SDSL (300 ul) 2. Antibody pair for WB: mouse purified polyclonal anti-SDSL (50 ug) |
| Storage Instruction | Store reagents of the antibody pair set at -20°C or lower. Please aliquot to avoid repeated freeze thaw cycle. Reagents should be returned to -20°C storage immediately after use. |

Applications

- Immunoprecipitation-Western Blot

[Protocol Download](#)

Gene Info — SDSL

| | |
|--------------------|---------------------------------------|
| Entrez GeneID | 113675 |
| Gene Name | SDSL |
| Gene Alias | SDS-RS1 |
| Gene Description | serine dehydratase-like |
| Gene Ontology | Hyperlink |
| Other Designations | serine dehydratase related sequence 1 |