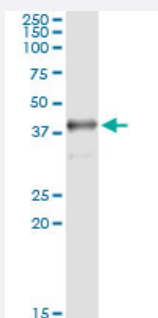


SDSL (Human) IP-WB Antibody Pair

Catalog # H00113675-PW2

Size 1 Set

Applications



Immunoprecipitation of SDSL transfected lysate using mouse monoclonal anti-SDSL and Protein A Magnetic Bead ([U0007](#)), and immunoblotted with rabbit polyclonal anti-SDSL.

Specification

Product Description	This IP-WB antibody pair set comes with one antibody for immunoprecipitation and another to detect the precipitated protein in western blot.
Reactivity	Human
Interspecies Antigen Sequence	Mouse (81); Rat (81)
Quality Control Testing	Immunoprecipitation-Western Blot (IP-WB) Immunoprecipitation of SDSL transfected lysate using mouse monoclonal anti-SDSL and Protein A Magnetic Bead (U0007), and immunoblotted with rabbit polyclonal anti-SDSL.
Supplied Product	Antibody pair set content: 1. Antibody pair for IP: mouse monoclonal anti-SDSL (300 ul) 2. Antibody pair for WB: rabbit polyclonal anti-SDSL (50 ul)
Storage Instruction	Store reagents of the antibody pair set at -20°C or lower. Please aliquot to avoid repeated freeze thaw cycle. Reagents should be returned to -20°C storage immediately after use.

Applications

- Immunoprecipitation-Western Blot

[Protocol Download](#)

Gene Info — SDSL

Entrez GeneID	113675
Gene Name	SDSL
Gene Alias	SDS-RS1
Gene Description	serine dehydratase-like
Gene Ontology	Hyperlink
Other Designations	serine dehydratase related sequence 1