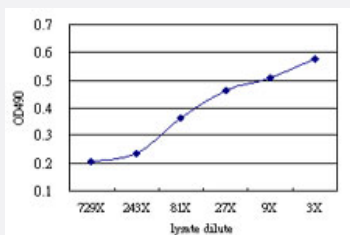


SDSL (Human) Matched Antibody Pair

Catalog # H00113675-AP61

Size 1 Set

Applications



Sandwich ELISA detection sensitivity ranging from approximately 729x to 3x dilution of the SDSL 293T overexpression lysate (non-denatured).

Specification

Product Description	This antibody pair set comes with a matched antibody pair to detect and quantify the protein level of human SDSL.
Reactivity	Human
Interspecies Antigen Sequence	Mouse (81); Rat (81)
Quality Control Testing	Standard curve using SDSL 293T overexpression lysate (non-denatured) as an analyte. Sandwich ELISA detection sensitivity ranging from approximately 729x to 3x dilution of the SDSL 293T overexpression lysate (non-denatured).
Supplied Product	Antibody pair set content: 1. Capture antibody: mouse monoclonal anti-SDSL (100 ug) 2. Detection antibody: rabbit MaxPab® affinity purified polyclonal anti-SDSL (50 ug) *Reagents are sufficient for at least 3-5 x 96 well plates using recommended protocols.
Storage Instruction	Store reagents of the antibody pair set at -20°C or lower. Please aliquot to avoid repeated freeze thaw cycle. Reagents should be returned to -20°C storage immediately after use.

Applications

- ELISA Pair (Transfected lysate)

[Protocol Download](#)

Gene Info — SDSL

Entrez GeneID	113675
Gene Name	SDSL
Gene Alias	SDS-RS1
Gene Description	serine dehydratase-like
Gene Ontology	Hyperlink
Other Designations	serine dehydratase related sequence 1