

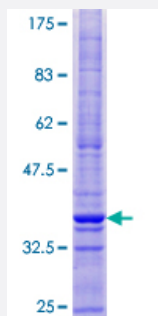
Full-Length

CMTM1 (Human) Recombinant Protein (P01)

Catalog # H00113540-P01

Size 25 ug, 10 ug

Applications



Specification

Product Description	Human CMTM1 full-length ORF (NP_851787.1, 1 a.a. - 114 a.a.) recombinant protein with GST-tag at N-terminal.
Sequence	MDPEHAKPESSEAPSGNLKQPETAAALSLILGALACFIITQANESFITTSLEICIVFFILYVLTLLHLL TYLHWPLLDLTNSIITAVFLSVVAILAMQEKKRRHLLYVGGR
Host	Wheat Germ (in vitro)
Theoretical MW (kDa)	39
Preparation Method	in vitro wheat germ expression system
Purification	Glutathione Sepharose 4 Fast Flow
Quality Control Testing	12.5% SDS-PAGE Stained with Coomassie Blue.
Storage Buffer	50 mM Tris-HCl, 10 mM reduced Glutathione, pH=8.0 in the elution buffer.
Storage Instruction	Store at -80°C. Aliquot to avoid repeated freezing and thawing.
Note	Best use within three months from the date of receipt of this protein.

Applications

- Enzyme-linked Immunoabsorbent Assay
- Western Blot (Recombinant protein)
- Antibody Production
- Protein Array

Gene Info — CMTM1

Entrez GeneID	113540
GeneBank Accession#	NM_181270.1
Protein Accession#	NP_851787.1
Gene Name	CMTM1
Gene Alias	CKLFH, CKLFH1, CKLFSF1, MGC71870
Gene Description	CKLF-like MARVEL transmembrane domain containing 1
Omim ID	607884
Gene Ontology	Hyperlink
Gene Summary	This gene belongs to the chemokine-like factor gene superfamily, a novel family that is similar to the chemokine and the transmembrane 4 superfamilies of signaling molecules. The protein encoded by this gene may play an important role in testicular development. Alternatively spliced transcript variants encoding different isoforms have been identified. [provided by RefSeq]
Other Designations	chemokine-like factor super family 1 chemokine-like factor superfamily 1 chemokine-like factor-like protein CKLFH1