

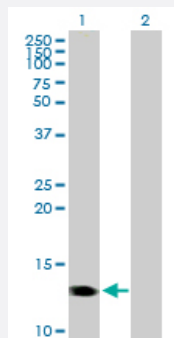
MaxPab®

# CMTM1 purified MaxPab mouse polyclonal antibody (B01P)

Catalog # H00113540-B01P

Size 50 ug

## Applications



### Western Blot (Transfected lysate)

Western Blot analysis of CMTM1 expression in transfected 293T cell line ([H00113540-T01](#)) by CMTM1 MaxPab polyclonal antibody.

Lane 1: CMTM1 transfected lysate(12.54 kDa).

Lane 2: Non-transfected lysate.

## Specification

Product Description	Mouse polyclonal antibody raised against a full-length human CMTM1 protein.
Immunogen	CMTM1 (NP_851787.1, 1 a.a. ~ 114 a.a) full-length human protein.
Sequence	MDPEHAKPESSEAPSGNLKQPETAAALSLILGALACFIITQANESFITTSLEICIVFFILYVLTLLHLL TYLHWPLLDLTNSIITAVFLSVVAILAMQEKKRRHLLYVGGR
Host	Mouse
Reactivity	Human
Quality Control Testing	Antibody reactive against mammalian transfected lysate.
Storage Buffer	In 1x PBS, pH 7.4
Storage Instruction	Store at -20°C or lower. Aliquot to avoid repeated freezing and thawing.

## Applications

- Western Blot (Transfected lysate)

Western Blot analysis of CMTM1 expression in transfected 293T cell line ([H00113540-T01](#)) by CMTM1 MaxPab polyclonal antibody.

Lane 1: CMTM1 transfected lysate(12.54 KDa).

Lane 2: Non-transfected lysate.

[Protocol Download](#)

## Gene Info — CMTM1

**Entrez GeneID** [113540](#)

**GeneBank Accession#** [NM\\_181270.1](#)

**Protein Accession#** [NP\\_851787.1](#)

**Gene Name** CMTM1

**Gene Alias** CKLFH, CKLFH1, CKLFSF1, MGC71870

**Gene Description** CKLF-like MARVEL transmembrane domain containing 1

**Omim ID** [607884](#)

**Gene Ontology** [Hyperlink](#)

**Gene Summary** This gene belongs to the chemokine-like factor gene superfamily, a novel family that is similar to the chemokine and the transmembrane 4 superfamilies of signaling molecules. The protein encoded by this gene may play an important role in testicular development. Alternatively spliced transcript variants encoding different isoforms have been identified. [provided by RefSeq]

**Other Designations** chemokine-like factor super family 1|chemokine-like factor superfamily 1|chemokine-like factor-like protein CKLFH1