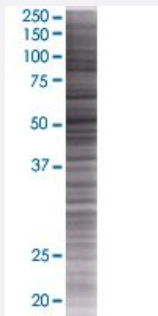


KIF12 293T Cell Transient Overexpression Lysate(Denatured)

Catalog # H00113220-T01

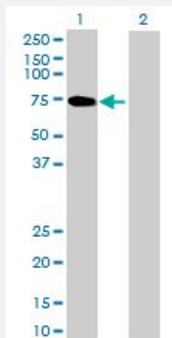
Size 100 uL

Applications



SDS-PAGE Gel

KIF12 transfected lysate.



Western Blot

Lane 1: KIF12 transfected lysate (56.6 KDa)

Lane 2: Non-transfected lysate.

Specification

Transfected Cell Line	293T
Plasmid	pCMV-KIF12 full-length
Host	Human
Theoretical MW (kDa)	56.6
Interspecies Antigen Sequence	Mouse (79); Rat (77)

Quality Control Testing

Transient overexpression cell lysate was tested with Anti-KIF12 antibody ([H00113220-B01](#)) by Western Blots.
SDS-PAGE Gel
KIF12 transfected lysate.
Western Blot
Lane 1: KIF12 transfected lysate (56.6 KDa)
Lane 2: Non-transfected lysate.

Storage Buffer

1X Sample Buffer (50 mM Tris-HCl, 2% SDS, 10% glycerol, 300 mM 2-mercaptoethanol, 0.01% Bromophenol blue)

Storage Instruction

Store at -80°C. Aliquot to avoid repeated freezing and thawing.

Applications

- Western Blot

Gene Info — KIF12

Entrez GeneID [113220](#)

GeneBank Accession# [NM_138424](#)

Protein Accession# [NP_612433](#)

Gene Name KIF12

Gene Alias RP11-56P10.3

Gene Description kinesin family member 12

Omim ID [611278](#)

Gene Ontology [Hyperlink](#)

Gene Summary KIF12 is a member of the kinesin superfamily of microtubule-associated molecular motors (see MIM 148760) that play important roles in intracellular transport and cell division (Nakagawa et al., 1997 [PubMed 9275178]).[supplied by OMIM]

Other Designations OTTHUMP00000021965