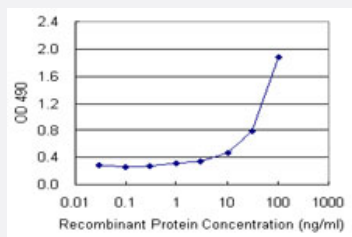


TP53RK (Human) Matched Antibody Pair

Catalog # H00112858-AP43

Size 1 Set

Applications



Sandwich ELISA detection sensitivity ranging from 1 ng/ml to 100 ng/ml.

Specification

Product Description	This antibody pair set comes with a matched antibody pair to detect and quantify the protein level of human TP53RK.
Reactivity	Human
Interspecies Antigen Sequence	Mouse (85); Rat (86)
Quality Control Testing	Standard curve using recombinant protein (H00112858-P01) as an analyte. Sandwich ELISA detection sensitivity ranging from 1 ng/ml to 100 ng/ml.
Supplied Product	Antibody pair set content: 1. Capture antibody: mouse monoclonal anti-TP53RK (100 ug) 2. Detection antibody: biotinylated mouse monoclonal anti-TP53RK, IgG1 Kappa (50 ug) *Reagents are sufficient for at least 3-5 x 96 well plates using recommended protocols.
Storage Instruction	Store reagents of the antibody pair set at -20°C or lower. Please aliquot to avoid repeated freeze thaw cycle. Reagents should be returned to -20°C storage immediately after use.

Applications

- [ELISA Pair \(Recombinant protein\)](#)

[Protocol Download](#)

Gene Info — TP53RK

Entrez GeneID	112858
Gene Name	TP53RK
Gene Alias	BUD32, C20orf64, Nori-2, Nori-2p, PRPK, dJ101A2
Gene Description	TP53 regulating kinase
Omim ID	608679
Gene Ontology	Hyperlink
Other Designations	OTTHUMP00000108264 p53-related protein kinase

Disease

- [Genetic Predisposition to Disease](#)
- [Kidney Failure](#)
- [Narcolepsy](#)