

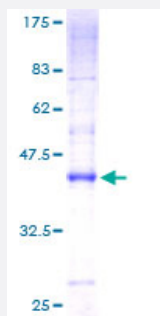
Full-Length

## CKLFSF7 (Human) Recombinant Protein (P01)

Catalog # H00112616-P01

Size 25 ug, 10 ug

### Applications



### Specification

<b>Product Description</b>	Human CKLFSF7 full-length ORF ( AAH10116, 1 a.a. - 175 a.a.) recombinant protein with GST-tag at N-terminal.
<b>Sequence</b>	MSHGAGLVRTTCSSGSALGPGAGAAQPSASPLEGLLDLSYPRTHAALLKVAQMVTLLIAFICVRS SLWTNYSAYSFEVVTICDLIMILAFYLVLHFRFYRVLTCISWPLSELLHYLIGTLLLLIASIVAASKSYN QSGLVAGAIFGFMATFLCMASIWLSYKISCVTQSTDAAV
<b>Host</b>	Wheat Germ (in vitro)
<b>Theoretical MW (kDa)</b>	44.99
<b>Interspecies Antigen Sequence</b>	Mouse (79); Rat (76)
<b>Preparation Method</b>	<a href="#">in vitro wheat germ expression system</a>
<b>Purification</b>	Glutathione Sepharose 4 Fast Flow
<b>Quality Control Testing</b>	12.5% SDS-PAGE Stained with Coomassie Blue.
<b>Storage Buffer</b>	50 mM Tris-HCl, 10 mM reduced Glutathione, pH=8.0 in the elution buffer.
<b>Storage Instruction</b>	Store at -80°C. Aliquot to avoid repeated freezing and thawing.

**Note**

Best use within three months from the date of receipt of this protein.

## Applications

- Enzyme-linked Immunoabsorbent Assay
- Western Blot (Recombinant protein)
- Antibody Production
- Protein Array

## Gene Info — CMTM7

**Entrez GeneID** [112616](#)**GeneBank Accession#** [BC010116](#)**Protein Accession#** [AAH10116](#)**Gene Name** CMTM7**Gene Alias** CKLFSF7, FLJ30992**Gene Description** CKLF-like MARVEL transmembrane domain containing 7**Omim ID** [607890](#)**Gene Ontology** [Hyperlink](#)

**Gene Summary** This gene belongs to the chemokine-like factor gene superfamily, a novel family that is similar to the chemokine and transmembrane 4 superfamilies. This gene is one of several chemokine-like factor genes located in a cluster on chromosome 3. The protein encoded by this gene is highly expressed in leukocytes, but its exact function is unknown. Alternatively spliced transcript variants encoding different isoforms have been identified. [provided by RefSeq]

**Other Designations** chemokine-like factor super family 7|chemokine-like factor super family member 7 variant 2|chemokine-like factor superfamily 7