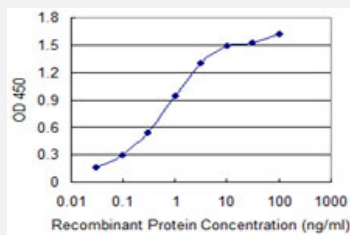


MRLC2 monoclonal antibody (M03), clone 1B22

Catalog # H00103910-M03

Size 100 ug

Applications



Sandwich ELISA (Recombinant protein)

Detection limit for recombinant GST tagged MRLC2 is 0.03 ng/ml as a capture antibody.

Specification

Product Description	Mouse monoclonal antibody raised against a partial recombinant MRLC2.
Immunogen	MRLC2 (NP_291024.1, 73 a.a. ~ 172 a.a) partial recombinant protein with GST tag. MW of the GST tag alone is 26 KDa.
Sequence	MMNEAPGPINFTMFLTMFGEKLNGLDPEDVIRNAFACFDEEATGTIQEDYLRELLTTMGDRFTDEE VDELYREAPIDKKGNFNIEFTRILKHGAKDKDD
Host	Mouse
Reactivity	Human
Interspecies Antigen Sequence	Mouse (99); Rat (99)
Isotype	IgG1 Kappa
Quality Control Testing	Antibody Reactive Against Recombinant Protein.
Storage Buffer	In 1x PBS, pH 7.4
Storage Instruction	Store at -20°C or lower. Aliquot to avoid repeated freezing and thawing.

Applications

- Sandwich ELISA (Recombinant protein)

Detection limit for recombinant GST tagged MRLC2 is 0.03 ng/ml as a capture antibody.

[Protocol Download](#)

- ELISA

Gene Info — MRLC2

Entrez GeneID [103910](#)

GeneBank Accession# [NM_033546](#)

Protein Accession# [NP_291024.1](#)

Gene Name MRLC2

Gene Alias MLC-B

Gene Description myosin regulatory light chain MRLC2

Omim ID [609211](#)

Gene Ontology [Hyperlink](#)

Gene Summary The activity of nonmuscle myosin II (see MYH9; MIM 160775) is regulated by phosphorylation of a regulatory light chain, such as MRLC2. This phosphorylation results in higher MgATPase activity and the assembly of myosin II filaments (Iwasaki et al., 2001 [PubMed 11942626]).[supplied by OMIM]

Other Designations OTTHUMP00000165806|OTTHUMP00000165807|OTTHUMP00000165808|myosin regulatory light chain MRCL2

Pathway

- [Focal adhesion](#)
- [Leukocyte transendothelial migration](#)
- [Regulation of actin cytoskeleton](#)
- [Tight junction](#)