

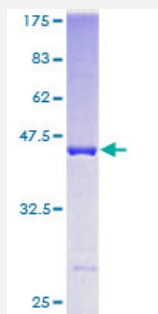
Full-Length

## PPP1R14A (Human) Recombinant Protein (P01)

Catalog # H00094274-P01

Size 25 ug, 10 ug

### Applications



### Specification

|                                      |  |
|--------------------------------------|--|
| <b>Product Description</b>           | Human PPP1R14A full-length ORF ( AAH21089, 1 a.a. - 147 a.a.) recombinant protein with GST-tag at N-terminal.  |
| <b>Sequence</b>                      | MAAQLGKRVLSKLQSPSRARGPGGSPGGLQKRHARVTVKYDRRELQRRLDVEKWIDGRLEEL<br>YRGMEADMPDEINIDELLELESEEERSRKIQGLLKSCGKPVEDFIQELLAKLQGLHRQPGLRQPSP<br>SHDGSLSPLQDRARTAHP |
| <b>Host</b>                          | Wheat Germ (in vitro)  |
| <b>Theoretical MW (kDa)</b>          | 41.91  |
| <b>Interspecies Antigen Sequence</b> | Mouse (85); Rat (85)   |
| <b>Preparation Method</b>            | <a href="#">in vitro wheat germ expression system</a>  |
| <b>Purification</b>                  | Glutathione Sepharose 4 Fast Flow  |
| <b>Quality Control Testing</b>       | 12.5% SDS-PAGE Stained with Coomassie Blue.  |
| <b>Storage Buffer</b>                | 50 mM Tris-HCl, 10 mM reduced Glutathione, pH=8.0 in the elution buffer.   |
| <b>Storage Instruction</b>           | Store at -80°C. Aliquot to avoid repeated freezing and thawing.  |

## Note

Best use within three months from the date of receipt of this protein.

## Applications

- Enzyme-linked Immunoabsorbent Assay
- Western Blot (Recombinant protein)
- Antibody Production
- Protein Array

## Gene Info — PPP1R14A

|                     |   |
|---------------------|---|
| Entrez GeneID       | <a href="#">94274</a>   |
| GeneBank Accession# | <a href="#">BC021089</a>  |
| Protein Accession#  | <a href="#">AAH21089</a>  |
| Gene Name           | PPP1R14A  |
| Gene Alias          | CPI-17, CPI17, PPP1INL  |
| Gene Description    | protein phosphatase 1, regulatory (inhibitor) subunit 14A   |
| Omim ID             | <a href="#">608153</a>  |
| Gene Ontology       | <a href="#">Hyperlink</a>   |
| Gene Summary        | PPP1R14A is a phosphorylation-dependent inhibitor of smooth muscle myosin phosphatase (see MIM 603768). Inhibition leads to increased myosin phosphorylation and enhances smooth muscle contraction in the absence of increased intracellular Ca(2+) concentration.[supplied by OMIM] |
| Other Designations  | 17-KDa protein 17-kDa PKC-potentiated inhibitory protein of PP1 PKC-potentiated inhibitory protein of PP1   |

## Pathway

- [Vascular smooth muscle contraction](#)