

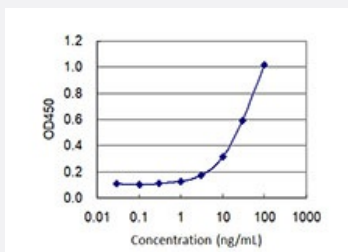
CX Grade

FOXQ1 monoclonal antibody (M04J), clone 1A10

Catalog # H00094234-M04J

Size 100 ug

Applications



Sandwich ELISA (Recombinant protein)

Detection limit for recombinant GST tagged FOXQ1 is 1 ng/ml as a capture antibody.

Specification

| | |
|--------------------------------------|---|
| Product Description | Mouse monoclonal antibody raised against a partial recombinant FOXQ1. This product is belong to Cell Culture Grade Antibody (CX Grade). |
| Immunogen | FOXQ1 (NP_150285, 110 a.a. ~ 219 a.a) partial recombinant protein with GST tag. MW of the GST tag alone is 26 KDa. |
| Sequence | RSKPYTRRPKPPYSYALIAMAIRDSAGGRLTLAEINEYLMGKFPFFRGSYTGWRNSVRHNLNDC FVKVLRDPSRPWGKDNYWMLNPNSEYTFADGVFRRRRKRLSHR |
| Host | Mouse |
| Reactivity | Human |
| Interspecies Antigen Sequence | Mouse (79); Rat (76) |
| Preparation Method | Cell Culture Production |
| Isotype | IgG2a Kappa |
| Quality Control Testing | Antibody Reactive Against Recombinant Protein. |

Storage Buffer

In 1x PBS, pH 7.4

Storage Instruction

Store at -20°C or lower. Aliquot to avoid repeated freezing and thawing.

Applications

- Sandwich ELISA (Recombinant protein)

Detection limit for recombinant GST tagged FOXQ1 is 1 ng/ml as a capture antibody.

[Protocol Download](#)

- ELISA

Gene Info — FOXQ1

Entrez GeneID[94234](#)**GeneBank Accession#**[NM_033260](#)**Protein Accession#**[NP_150285](#)**Gene Name**

FOXQ1

Gene Alias

HFH1

Gene Description

forkhead box Q1

Gene Ontology[Hyperlink](#)**Gene Summary**

FOXQ1 is a member of the FOX gene family, which is characterized by a conserved 110-amino acid DNA-binding motif called the forkhead or winged helix domain. FOX genes are involved in embryonic development, cell cycle regulation, tissue-specific gene expression, cell signaling, and tumorigenesis (Bieller et al., 2001 [PubMed 11747606]).[supplied by OMIM]

Other Designations

winged helix/forkhead transcription factor