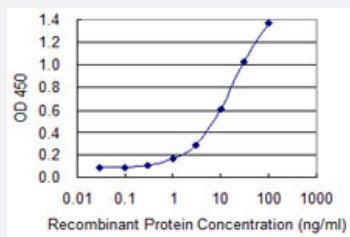


# CGB7 monoclonal antibody (M01), clone 6F12

Catalog # H00094027-M01

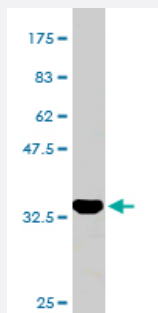
Size 100 ug

## Applications



### Sandwich ELISA (Recombinant protein)

Detection limit for recombinant GST tagged CGB7 is 0.3 ng/ml as a capture antibody.



Western Blot detection against Immunogen (37.84 KDa) .

## Specification

### Product Description

Mouse monoclonal antibody raised against a partial recombinant CGB7.

### Immunogen

CGB7 (NP\_149133, 56 a.a. ~ 165 a.a) partial recombinant protein with GST tag. MW of the GST tag alone is 26 KDa.

### Sequence

GYCPTMTRVLQGVLPALPQVVCNYRDVRFESIRLPGCPRGVNPVVSYAVALSCQCALCRRSTTD  
CGGPKDHPLTCDDPRFQASSSSKAPPPSLPSPSRLPGPSDTPILPQ

### Host

Mouse

### Reactivity

Human

### Isotype

IgG2a Kappa

**Quality Control Testing**

Antibody Reactive Against Recombinant Protein.  
Western Blot detection against Immunogen (37.84 KDa) .

**Storage Buffer**

In 1x PBS, pH 7.4

**Storage Instruction**

Store at -20°C or lower. Aliquot to avoid repeated freezing and thawing.

## Applications

- Western Blot (Recombinant protein)

[Protocol Download](#)

- Sandwich ELISA (Recombinant protein)

Detection limit for recombinant GST tagged CGB7 is 0.3 ng/ml as a capture antibody.

[Protocol Download](#)

- ELISA

## Gene Info — CGB7

**Entrez GeneID**

[94027](#)

**GeneBank Accession#**

[NM\\_033142](#)

**Protein Accession#**

[NP\\_149133](#)

**Gene Name**

CGB7

**Gene Alias**

CG-beta-a, FLJ35403, FLJ43118

**Gene Description**

chorionic gonadotropin, beta polypeptide 7

**Omim ID**

[608826](#)

**Gene Ontology**

[Hyperlink](#)

**Gene Summary**

This gene is a member of the glycoprotein hormone beta chain family and encodes the beta 7 sub unit of chorionic gonadotropin (CG). Glycoprotein hormones are heterodimers consisting of a common alpha subunit and an unique beta subunit which confers biological specificity. CG is produced by the trophoblastic cells of the placenta and stimulates the ovaries to synthesize the steroids that are essential for the maintenance of pregnancy. The beta subunit of CG is encoded by 6 genes which are arranged in tandem and inverted pairs on chromosome 19q13.3 and contiguous with the luteinizing hormone beta subunit gene. [provided by RefSeq]

**Other Designations**chorionic gonadotropin beta 7 subunit

---