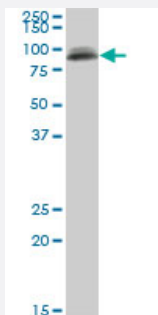


PIGS monoclonal antibody (M02), clone 3F3

Catalog # H00094005-M02

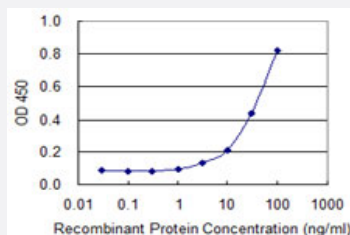
Size 100 ug

Applications



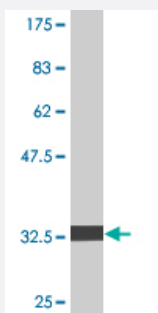
Western Blot (Cell lysate)

PIGS monoclonal antibody (M02), clone 3F3. Western Blot analysis of PIGS expression in NIH/3T3 (Cat # L018V1).



Sandwich ELISA (Recombinant protein)

Detection limit for recombinant GST tagged PIGS is 1 ng/ml as a capture antibody.



Western Blot detection against Immunogen (33.33 KDa) .

Specification

Product Description

Mouse monoclonal antibody raised against a partial recombinant PIGS.

Immunogen	PIGS (NP_149975.1, 450 a.a. ~ 518 a.a) partial recombinant protein with GST tag. MW of the GST tag alone is 26 KDa.
Sequence	GKISNVIKDDVASEVYKAVAAVQKSAEELASGHLASAFVASQEAVTSSELAFFDPSSLHLLYFPD DQK
Host	Mouse
Reactivity	Human, Mouse
Interspecies Antigen Sequence	Mouse (91); Rat (91)
Isotype	IgG2b Kappa
Quality Control Testing	Antibody Reactive Against Recombinant Protein. Western Blot detection against Immunogen (33.33 KDa) .
Storage Buffer	In 1x PBS, pH 7.4
Storage Instruction	Store at -20°C or lower. Aliquot to avoid repeated freezing and thawing.

Applications

- Western Blot (Cell lysate)

PIGS monoclonal antibody (M02), clone 3F3. Western Blot analysis of PIGS expression in NIH/3T3 (Cat # L018V1).

[Protocol Download](#)

- Western Blot (Recombinant protein)

[Protocol Download](#)

- Sandwich ELISA (Recombinant protein)

Detection limit for recombinant GST tagged PIGS is 1 ng/ml as a capture antibody.

[Protocol Download](#)

- ELISA

Gene Info — PIGS

Entrez GeneID [94005](#)

GeneBank Accession#	NM_033198
Protein Accession#	NP_149975.1
Gene Name	PIGS
Gene Alias	DKFZp686K20216, FLJ45226
Gene Description	phosphatidylinositol glycan anchor biosynthesis, class S
Omim ID	610271
Gene Ontology	Hyperlink
Gene Summary	<p>This gene encodes a protein that is involved in GPI-anchor biosynthesis. The glycosylphosphatidylinositol (GPI) anchor is a glycolipid found on many blood cells and serves to anchor proteins to the cell surface. This gene encodes an essential component of the multisubunit enzyme, GPI transamidase. GPI transamidase mediates GPI anchoring in the endoplasmic reticulum, by catalyzing the transfer of fully assembled GPI units to proteins. [provided by RefSeq]</p>
Other Designations	GPI transamidase subunit phosphatidylinositol glycan, class S

Pathway

- [Glycosylphosphatidylinositol\(GPI\)-anchor biosynthesis](#)
- [Metabolic pathways](#)